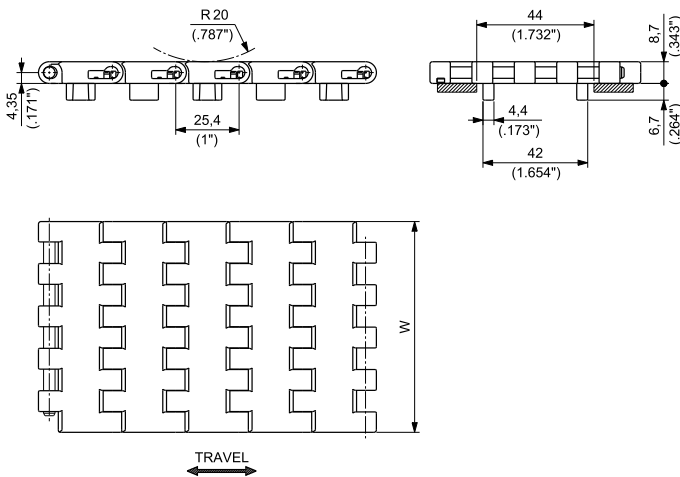


## 8,7 mm (0.343") THICKNESS SOLID TOP

Extremely good flatness, manufacturing accuracy and low coefficient of friction make the side transfer of the product very easy.  
Completely closed surface, no gap between the modules, even when engaging on the sprockets.  
Particularly suitable for glass products, small sized products and unstable containers (For example PET bottles with petaloid base).



MATERIALS		ITEM DESCRIPTION	PART NUMBER	WIDTH W		PLATE THICKNESS		WORKING LOAD (25°C/77°F)		WEIGHT	
Plate	Pin			mm	inch	mm	inch	N	lbs	kg/m	lbs/ft
ULTRA PERFORMANCE HOMOPOLYMER DELTRIN® <b>UP</b>		1600AG UP K83,8	1600AGUPKRA/000	83,8	3.30	8,7	0.343	1850	416	0,75	0.50
SPECIAL DELTRIN® REINFORCED WITH KEVLAR® <b>DK2</b>	PBT	1600AG D2KK83,8	1600AGD2KKRA/000	83,8	3.30	8,7	0.343	1850	416	0,75	0.50
ECOLOGICAL FRICTION ABATING THERMOPLASTIC <b>E-FAST</b>		1600AG EFK83,8	1600AGEFKRA/000	83,8	3.30	8,7	0.343	1850	416	0,75	0.50



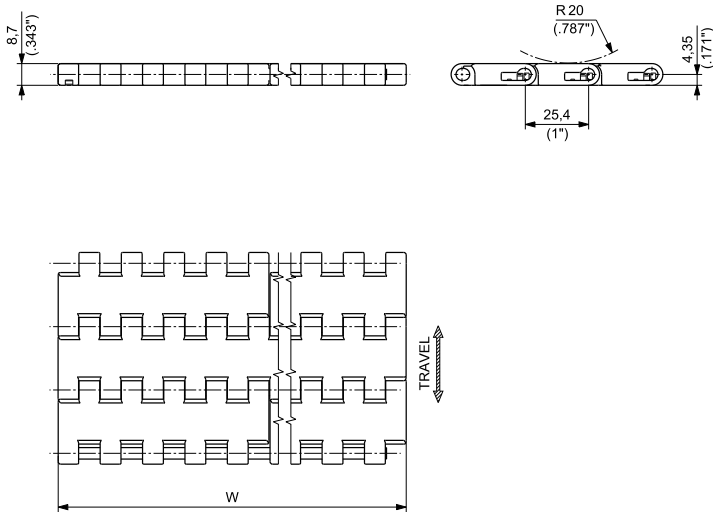
## 8,7 mm (0.343") THICKNESS SOLID TOP

This belt offers a smooth surface to provide excellent support and minimize product tippage. Particularly suitable for glass products, small sized products and unstable containers (for example PET bottles with petaloid base).

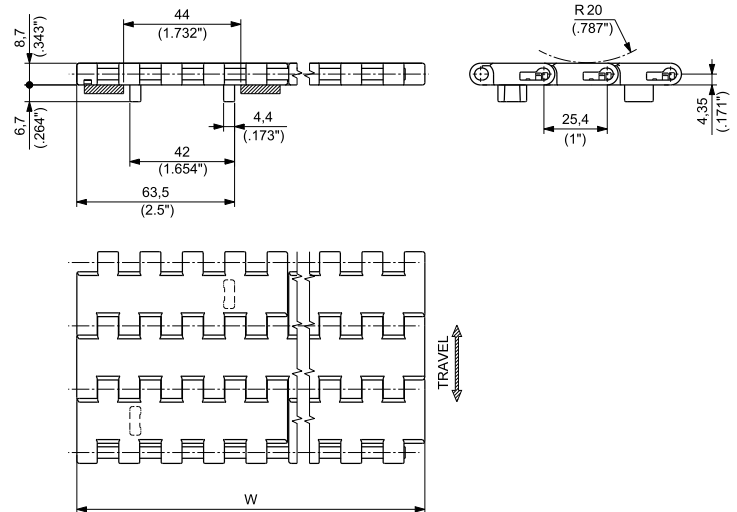
- Belt widths: 85 mm (3.346") or wider in 85 mm (3.346") increments
- Working Load (at 25°C/77°F): 21600 N/m (1,480 lbs/ft) for **UP**, **DK<sup>2</sup>** and **e-F.A.S.T.** materials
- Belt weight: 7,66 kg/m<sup>2</sup> (1.57 lbs/ft<sup>2</sup>) for **UP**, **DK<sup>2</sup>** and **e-F.A.S.T.** materials



### VERSION WITHOUT TRACKING GUIDE



### VERSION WITH TRACKING GUIDE



NOTE: The belt is also available with single tracking guide at both belt sides. Please contact REGINA customer service for further information.

WIDTH W		MATERIALS						Pin
		UP		DK <sup>2</sup>		e-F.A.S.T.		
		ULTRA PERFORMANCE HOMOPOLYMER DELRIN®		SPECIAL DELRIN® REINFORCED WITH KEVLAR®		ECOLOGICAL FRICTION ABATING THERMOPLASTIC		
		PART NUMBER		PART NUMBER		PART NUMBER		
mm	inch	WITHOUT TRACKING GUIDE	WITH TRACKING GUIDE	WITHOUT TRACKING GUIDE	WITH TRACKING GUIDE	WITHOUT TRACKING GUIDE	WITH TRACKING GUIDE	
85	3.35	1600AUP0085	1600AGUP0085	1600AD2K0085	1600AGD2K0085	1600AEF0085	1600AGEF0085	PBT
170	6.69	1600BUP0170	1600BG1UP0170	1600BD2K0170	1600BG1D2K0170	1600AEF0170	1600AG1EF0170	PBT for e-F.A.S.T. material POLYPROPYLENE for all other materials (PBT on request for all other materials)
255	10.04	1600BUP0255	1600BG1UP0255	1600BD2K0255	1600BG1D2K0255	1600AEF0255	1600AG1EF0255	
340	13.39	1600BUP0340	1600BG1UP0340	1600BD2K0340	1600BG1D2K0340	1600AEF0340	1600AG1EF0340	
425	16.73	1600BUP0425	1600BG1UP0425	1600BD2K0425	1600BG1D2K0425	1600AEF0425	1600AG1EF0425	
510	20.08	1600BUP0510	1600BG1UP0510	1600BD2K0510	1600BG1D2K0510	1600AEF0510	1600AG1EF0510	
595	23.43	1600BUP0595	1600BG1UP0595	1600BD2K0595	1600BG1D2K0595	1600AEF0595	1600AG1EF0595	
680	26.77	1600BUP0680	1600BG1UP0680	1600BD2K0680	1600BG1D2K0680	1600AEF0680	1600AG1EF0680	
765	30.12	1600BUP0765	1600BG1UP0765	1600BD2K0765	1600BG1D2K0765	1600AEF0765	1600AG1EF0765	
850	33.46	1600BUP0850	1600BG1UP0850	1600BD2K0850	1600BG1D2K0850	1600AEF0850	1600AG1EF0850	
935	36.81	1600BUP0935	1600BG1UP0935	1600BD2K0935	1600BG1D2K0935	1600AEF0935	1600AG1EF0935	
1020	40.16	1600BUP1020	1600BG1UP1020	1600BD2K1020	1600BG1D2K1020	1600AEF1020	1600AG1EF1020	

Belt wider than 1020 mm (40.16") are available in 85 mm (3.35") increments.  
To identify the Part Numbers, please substitute the last four digits of the PN with the desired width.  
Example: for a 1105 mm wide belt (=1020+85 mm) without guide, the PN for UP material is "1600BUP1105".



Standard packaging:  
Belt widths > 1020 mm (40.16") are supplied in rolls of 3,048 m (10 ft) each.  
Belt widths > 1105 mm (43.50") are supplied at the length requested by the customer.