



# 300 Series Modular Belts

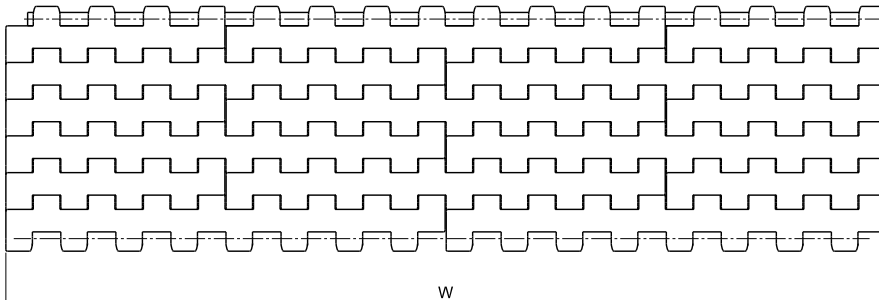
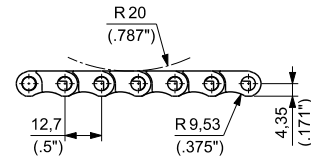
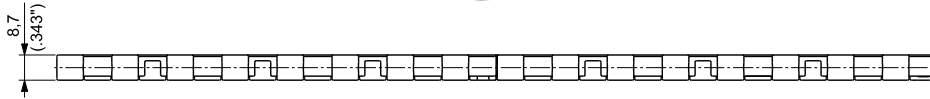


## 8,7 mm (0.343") THICKNESS SOLID TOP

The belt offers a completely closed top surface design for an excellent product support without tipping. The round bottom surface combined with the reduced pitch (1/2") transfer of products provides the minimal chordal effect for an optimum head transfer of products.



- Belt widths: 114,3 mm (4 1/2"), 76,2 mm (3") or wider in 76,2 mm (3") increments
- Working Load (at 25°C/77°F): 14000 N/m (960 lbs/ft) for **UP**, **DK<sup>2</sup>** and **e-F.A.S.T.** materials  
10000 N/m (685 lbs/ft) for **PP** materials
- Belt weight: 9,52 kg/m<sup>2</sup> (1.95 lbs/ft<sup>2</sup>) for **UP**, **DK<sup>2</sup>** and **e-F.A.S.T.** materials  
6,55 kg/m<sup>2</sup> (1.34 lbs/ft<sup>2</sup>) for **PP** material



WIDTH W		MATERIALS				Pin
		Module				
		<b>UP</b> ULTRA PERFORMANCE HOMOPOLYMER DELRIN®	<b>DK<sup>2</sup></b> SPECIAL DELRIN® REINFORCED WITH KEVLAR®	<b>PP</b> SPECIAL POLYPROPYLENE®	<b>e-F.A.S.T.</b> ECOLOGICAL FRICTION ABATING THERMOPLASTIC	
mm	inch	PART NUMBER	PART NUMBER	PART NUMBER	PART NUMBER	
114,3	4.5	300AUPKG/000	300AD2KKG/000	300APPKG/000	300AEFKG/000	PBT
76,2	3	300BUP003	300BD2K003	300BPP003	300AEF003	PBT for e-F.A.S.T. material POLYPROPYLENE for all other materials (PBT on request for all other materials)
152,4	6	300BUP006	300BD2K006	300BPP006	300AEF006	
228,6	9	300BUP009	300BD2K009	300BPP009	300AEF009	
304,8	12	300BUP012	300BD2K012	300BPP012	300AEF012	
381,0	15	300BUP015	300BD2K015	300BPP015	300AEF015	
457,2	18	300BUP018	300BD2K018	300BPP018	300AEF018	
533,4	21	300BUP021	300BD2K021	300BPP021	300AEF021	
609,6	24	300BUP024	300BD2K024	300BPP024	300AEF024	
685,8	27	300BUP027	300BD2K027	300BPP027	300AEF027	
762,0	30	300BUP030	300BD2K030	300BPP030	300AEF030	
838,2	33	300BUP033	300BD2K033	300BPP033	300AEF033	
914,4	36	300BUP036	300BD2K036	300BPP036	300AEF036	
990,6	39	300BUP039	300BD2K039	300BPP039	300AEF039	

① ACTUAL WIDTH CAN BE UP TO 1% GREATER THAN NOMINAL WIDTH

Belt wider than 990,6 mm (39") are available in 76,2 (3") increments.

To identify the Part Numbers, please substitute the last three digits of the PN with the desired width.

Example: for a 42" wide belt (≈39+3 inches), the PN for UP material is 300BUP042.



Standard packaging:

114,3 mm (4,5") wide belt is supplied in rolls of 3,048m (10ft) each.

Other belt widths are supplied in the length requested by the customer.