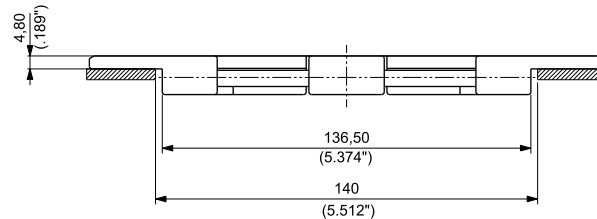
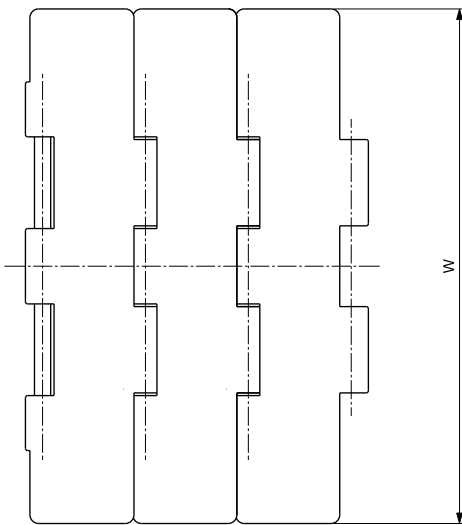
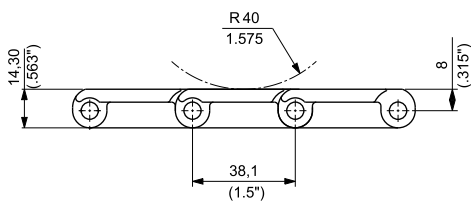




**DOUBLE HINGE  
REINFORCED TOP PLATE  
PITCH 1 1/2" (38,1 mm)  
THICKNESS 4,8 mm (0.189")  
HINGE 136,5 mm (5.374")**



MATERIALS		ITEM DESCRIPTION	PART NUMBER	WIDTH W		PLATE THICKNESS		WORKINGLOAD (25°C/77°F)		WEIGHT	
Plate	Pin			mm	inch	mm	inch	N	lbs	kg/m	lbs/ft
		UP821 K 7 1/2	UP821KL/000	190,5	7.50	4,8	0.19	2750	618	2,48	1.67
ULTRAPERFORMANCE HOMOPOLYMERDELIRIN® <b>UP</b>	AUSTENITIC STAINLESS STEEL	UP821 K 10	UP821KM/000	254,0	10.00	4,8	0.19	2750	618	2,86	1.92
		UP821 K 12	UP821KN/000	304,8	12.00	4,8	0.19	2750	618	3,16	2.12
SPECIAL DELRIN® REINFORCED WITH KEVLAR® <b>DK22™</b>	AUSTENITIC STAINLESS STEEL	D2K 821 K 7 1/2	D2K821KL/000	190,5	7.50	4,8	0.19	2750	618	2,47	1.66