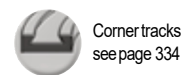
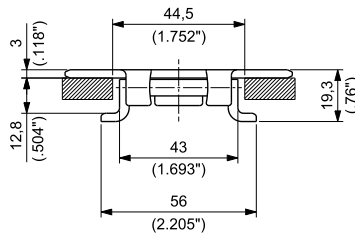
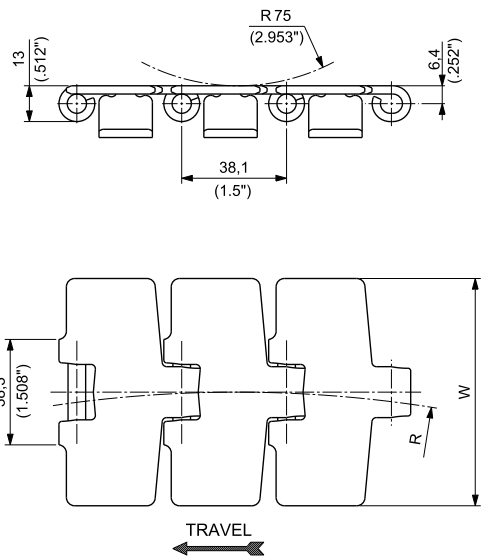


**TAB**  
**PITCH 1 1/2"(38,1 mm)**  
**THICKNESS 3 mm (0.118")**  
**HINGE 43 mm (1.693")**



MATERIALS		ITEM DESCRIPTION	PART NUMBER	WIDTH W		SURFACE FINISH Ra	POLISHED HINGES	SIDE FLEXING RADIUS		YIELD LOAD AVERAGE		WEIGHT	
Plate	Pin			mm	inch			mm	R inch	N	lbs	kg/m	lbs/ft
CARBON STEEL <b>S</b>	CASEHARDENED STEEL	S881T K 3 1/4	S881TKD/000	82,6	3.25	-	NO	457,2	18	11600	2,608	2,96	1.99
		S881T K 4 1/2	S881TKG/000	114,3	4.50	-	NO	609,6	24	11600	2,608	3,60	2.42
		S881T K 7 1/2	S881TKL/000	190,5	7.50	-	NO	609,6	24	11600	2,608	5,01	3.36
AUSTENITIC STAINLESS STEEL <b>SS</b>	AUSTENITIC STAINLESS STEEL	SS881T K 3 1/4	SS881TKD/000	82,6	3.25	0,3	NO	457,2	18	5600	1,259	2,99	2.01
		SS881T K 4 1/2	SS881TKG/000	114,3	4.50	0,3	NO	609,6	24	5600	1,259	3,63	2.44
		SS881T K 7 1/2	SS881TKL/000	190,5	7.50	0,3	NO	609,6	24	5600	1,259	5,05	3.39