

SINGLEHINGE

REDUCEDPLATEGAP 1,6 mm

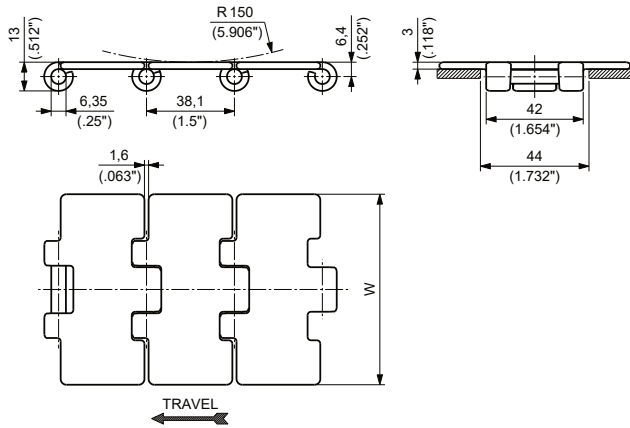
INCREASEDPIN HARDNESS(PHD 915 SERIES)

SPECIALXPHD CHAINS FOR PRESSURELESSCOMBINERS

PITCH 1 1/2"(38,1 mm)

THICKNESS3 mm (0.118")

HINGE42 mm (1.654")



915



Materials
see page 12



Sprockets
see pages 120+127



Applications
see page 22

MATERIALS		ITEM DESCRIPTION	PART NUMBER	WIDTH W		SURFACE FINISH Ra	POLISHED HINGES	YIELD LOAD AVERAGE		WEIGHT	
Plate	Pin			mm	inch			N	lbs	kg/m	lbs/ft
PRIMA P	AUSTENITIC STAINLESSSTEEL	P 915 K 2 1/4	P915KS/000	57,1	2.25	0,3	NO	8500	1,913	2,00	1.34
		P 915 K 2 1/2	P915KR/000	63,5	2.50	0,3	NO	8500	1,913	2,14	1.44
		P 915 K 2 5/8	P915KC/000	66,7	2.63	0,3	NO	8500	1,913	2,21	1.49
		P 915 K 3 1/4	P915KD/000	82,6	3.25	0,3	YES	8500	1,913	2,57	1.72
		P 915 K 83,8	P915KRA/000	83,8	3.30	0,3	YES	8500	1,913	2,60	1.75
		P 915 K 3 1/2	P915KE/000	88,9	3.50	0,3	NO	8500	1,913	2,71	1.82
		P 915 K 4	P915KF/000	101,6	4.00	0,3	NO	8500	1,913	2,99	2.00
		P 915 K 4 1/2	P915KG/000	114,3	4.50	0,3	NO	8500	1,913	3,28	2.20
		P 915 K 6	P915KH/000	152,4	6.00	0,3	NO	8500	1,913	4,13	2.78
		P 915 K 7 1/2	P915KL/000	190,5	7.50	0,3	NO	8500	1,913	4,99	3.35

PHD915

MATERIALS		ITEM DESCRIPTION	PART NUMBER	WIDTH W		SURFACE FINISH Ra	POLISHED HINGES	YIELD LOAD AVERAGE		WEIGHT	
Plate	Pin			mm	Inch			N	lbs	kg/m	lbs/ft
PRIMA P	HARDENED MARTENSITIC STAINLESSSTEEL	XPHD915 K 3 1/4	XPHD915KD/000	82,6	3.25	0,2	YES	8500	1,913	2,57	1.72
		XPHD915 K 83,8	XPHD915KRA/000	83,8	3.30	0,2	YES	8500	1,913	2,60	1.75
		PHD 915 K 4 1/2	PHD915KG/000	114,3	4.50	0,3	NO	8500	1,913	3,28	2.20
		PHD 915 K 7 1/2	PHD915KL/000	190,5	7.50	0,3	NO	8500	1,913	4,99	3.35



SUITABLE FOR CHAINS:

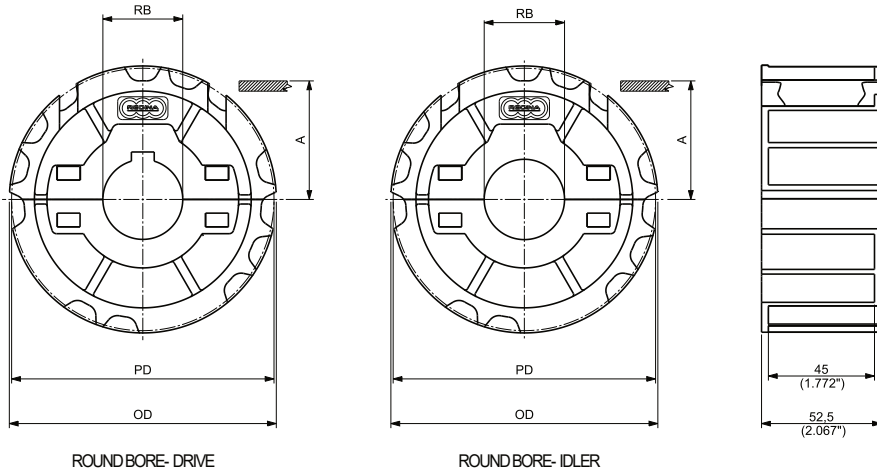
- 915 / PHD915
- PHDG915
- 981M / PHD981M
- PHDG981M

MATERIALS

SPROCKETS:	PGF	REINFORCED POLYAMIDE
SCREWS:	SS	STAINLESS STEEL
NUTS:	B+NC	NICKEL PLATED BRASS



19T & 21T SPROCKETS (for 23T & 25T see next page)



MOULDED SPLIT DRIVE AND IDLER SPROCKETS

N. TEETH	PITCH DIAMETER PD		OUTSIDE DIAMETER OD		WEAR STRIP POSITIONING A		BORESIZE*		PART NUMBER ROUND BORE RB		WEIGHT	
	mm	inch	mm	inch	mm	inch	mm	inch**	DRIVE	IDLER	Kg	lbs
19	117,34	4.620	117,00	4.606	62,07	2.444	25		CMT028151901	CMT038151901	0,40	0.88
							30		CMT028151902	CMT038151902	0,39	0.86
							35		CMT028151903	CMT038151903	0,38	0.84
							40		CMT028151904	CMT038151904	0,37	0.82
							45		CMT028151905	CMT038151905	0,36	0.79
							1		CMT028151906	CMT038151906	0,40	0.88
							1 1/4		CMT028151908	CMT038151908	0,39	0.86
							1 3/8		CMT028151911	CMT038151911	0,39	0.86
							1 7/16		CMT028151909	CMT038151909	0,38	0.84
							1 1/2		CMT028151910	CMT038151910	0,37	0.82
21	129,30	5.091	130,00	5.118	68,05	2.679	25		CMT028152101	CMT038152101	0,52	1.15
							30		CMT028152102	CMT038152102	0,51	1.12
							35		CMT028152103	CMT038152103	0,50	1.10
							40		CMT028152104	CMT038152104	0,48	1.06
							45		CMT028152105	CMT038152105	0,47	1.04
							1		CMT028152106	CMT038152106	0,52	1.15
							1 1/4		CMT028152108	CMT038152108	0,51	1.12
							1 3/8		CMT028152111	CMT038152111	0,50	1.10
							1 7/16		CMT028152109	CMT038152109	0,49	1.08
							1 1/2		CMT028152110	CMT038152110	0,49	1.08

*Diameter is indicated.

** Imperial round bore drive sprockets are supplied with setscrew. Metric round bore drive sprockets are supplied without setscrew.

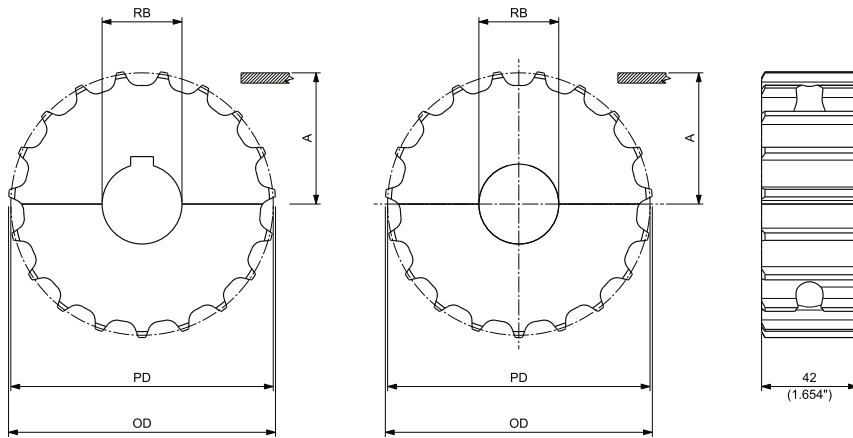


SUITABLE FOR CHAINS:

- 915 / PHD915
- PHDG915
- 981M / PHD981M
- PHDG981M

MATERIALS	
SPROCKETS:	PA POLYAMIDE
SCREWS:	SS STAINLESS STEEL
NUTS:	B BRASS

17T, 19T & 21T SPROCKETS (for 23T, 25T & 27T seenext page)



ROUND BORE- DRIVE

ROUND BORE- IDLER

MACHINED SPLIT DRIVE AND IDLER SPROCKETS

N. TEETH	PITCH DIAMETER PD		OUTSIDE DIAMETER OD		WEAR STRIP POSITIONING A		BORESIZE*		PART NUMBER ROUND BORE RB		WEIGHT	
	mm	inch	mm	inch	mm	inch	mm	inch**	DRIVE	IDLER	Kg	lbs
17	105,47	4.152	104,40	4.110	56,34	2.218	25		CMAS028151725	CMAS038151725	0,36	0.80
							30		CMAS028151730	CMAS038151730	0,35	0.78
							35		CMAS028151735	CMAS038151735	0,34	0.75
							40		CMAS028151740	CMAS038151740	0,33	0.72
							1		CMAS0281517254	CMAS0381517254	0,36	0.80
							1 ¼		CMAS0281517317	CMAS0381517317	0,35	0.78
							1 ⅜		CMAS0281517349	CMAS0381517349	0,35	0.78
							1 ⅞		CMAS0281517365	CMAS0381517365	0,34	0.75
							1 1/2		CMAS0281517381	CMAS0381517381	0,33	0.73
							19	117,34	4.620	117,00	4.606	62,27
30		CMAS028151930	CMAS038151930	0,44	0.97							
35		CMAS028151935	CMAS038151935	0,43	0.95							
40		CMAS028151940	CMAS038151940	0,42	0.92							
1		CMAS0281519254	CMAS0381519254	0,45	1.00							
1 ¼		CMAS0281519317	CMAS0381519317	0,45	1.00							
1 ⅜		CMAS0281519349	CMAS0381519349	0,44	0.97							
1 ⅞		CMAS0281519365	CMAS0381519365	0,43	0.94							
1 1/2		CMAS0281519381	CMAS0381519381	0,42	0.92							
21	129,26	5.089	129,40	5.094	68,23	2.686						
							30		CMAS028152130	CMAS038152130	0,57	1.26
							35		CMAS028152135	CMAS038152135	0,53	1.17
							40		CMAS028152140	CMAS038152140	0,52	1.14
							1		CMAS0281521254	CMAS0381521254	0,55	1.22
							1 ¼		CMAS0281521317	CMAS0381521317	0,55	1.22
							1 ⅜		CMAS0281521349	CMAS0381521349	0,54	1.20
							1 ⅞		CMAS0281521365	CMAS0381521365	0,53	1.17
							1 1/2		CMAS0281521381	CMAS0381521381	0,52	1.15

*Diameter is indicated.

** Imperial round bore drive sprockets are supplied with setscrew. Metric round bore drive sprockets are supplied without setscrew.

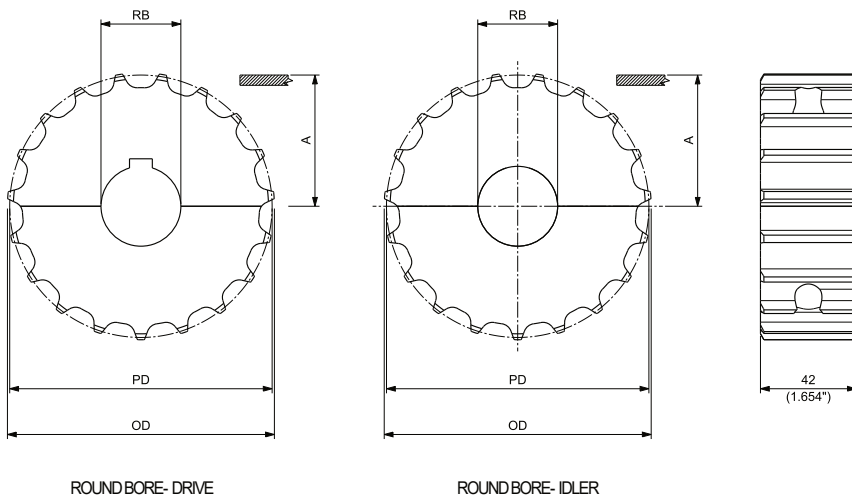
SUITABLE FOR CHAINS:

- 915 / PHD915
- PHDG915
- 981M / PHD981M
- PHDG981M

MATERIALS

SPROCKETS:	PA	POLYAMIDE
SCREWS:	SS	STAINLESS STEEL
NUTS:	B	BRASS

23T, 25T & 27T SPROCKETS (for 17T, 19T & 21T see previous page)



MACHINED SPLIT DRIVE AND IDLER SPROCKETS

N. TEETH	PITCH DIAMETER PD		OUTSIDE DIAMETER OD		WEARSTRIP POSITIONING A		BORE SIZE*		PART NUMBER ROUND BORE RB		WEIGHT	
	mm	inch	mm	inch	mm	inch	mm	inch**	DRIVE	IDLER	Kg	lbs
23	141,22	5.560	141,90	5.587	74,21	2.922	25		CMAS028152325	CMAS038152325	0,66	1.46
							30		CMAS028152330	CMAS038152330	0,65	1.44
							35		CMAS028152335	CMAS038152335	0,64	1.41
							40		CMAS028152340	CMAS038152340	0,63	1.38
								1	CMAS0281523254	CMAS0381523254	0,66	1.46
								1 ¼	CMAS0281523317	CMAS0381523317	0,66	1.46
								1 ⅜	CMAS0281523349	CMAS0381523349	0,65	1.44
								1 ⅞	CMAS0281523365	CMAS0381523365	0,64	1.41
								1 1/2	CMAS0281523381	CMAS0381523381	0,63	1.39
							25	153,20	6.031	154,20	6.071	80,20
30		CMAS028152530	CMAS038152530	0,81	1.77							
35		CMAS028152535	CMAS038152535	0,79	1.75							
40		CMAS028152540	CMAS038152540	0,78	1.71							
	1	CMAS0281525254	CMAS0381525254	0,82	1.80							
	1 ¼	CMAS0281525317	CMAS0381525317	0,82	1.80							
	1 ⅜	CMAS0281525349	CMAS0381525349	0,81	1.77							
	1 ⅞	CMAS0281525365	CMAS0381525365	0,79	1.75							
	1 1/2	CMAS0281525381	CMAS0381525381	0,78	1.73							
27	165,21	6.504	166,40	6.551	86,20	3.394						
							30		CMAS028152730	CMAS038152730	1,00	2.20
							35		CMAS028152735	CMAS038152735	0,98	2.17
							40		CMAS028152740	CMAS038152740	0,97	2.14
								1	CMAS0281527254	CMAS0381527254	1,00	2.20
								1 ¼	CMAS0281527317	CMAS0381527317	0,98	2.16
								1 ⅜	CMAS0281527349	CMAS0381527349	0,98	2.16
								1 ⅞	CMAS0281527365	CMAS0381527365	0,97	2.14
								1 1/2	CMAS0281527381	CMAS0381527381	0,97	2.14

*Diameter is indicated.

** Imperial round bore drive sprockets are supplied with setscrew. Metric round bore drive sprockets are supplied without setscrew.

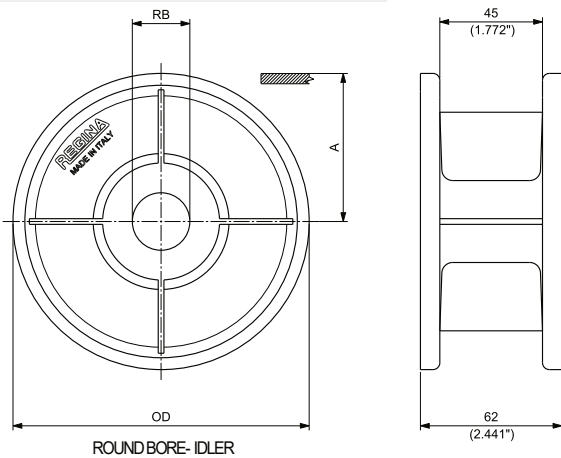


SUITABLE FOR CHAINS:

- 915 / PHD915
- PHDG915
- 881
- 981 / 981M / PHD981M
- PHDG981M
- 820
- HFX820
- 831
- 828
- 880 / 880M RG
- 879

MATERIALS

SPROCKETS: **PGF** REINFORCEDPOLYAMIDE



MOULDED SOLID IDLER WHEELS

N. TEETH	OUTSIDE DIAMETER OD		WEAR STRIP POSITIONING A		BORESIZE*		PART NUMBER ROUND BORE RB IDLER	WEIGHT	
	mm	inch	mm	inch	mm	inch		Kg	lbs
21	129,80	5.110	64,90	2.555	25		CMT032502101	0,22	0.48
					30		CMT032502102	0,22	0.49
					35		CMT032502103	0,22	0.49
					40		CMT032502104	0,20	0.44
					1		CMT032502106	0,22	0.49
					1 ¼		CMT032502108	0,21	0.47
					1 ⅜		CMT032502111	0,21	0.47
					1 ⅞		CMT032502109	0,20	0.44
23	142,30	5.602	71,15	2.801	1 ½		CMT032502110	0,22	0.49
					25		CMT032502301	0,25	0.54
					30		CMT032502302	0,25	0.55
					35		CMT032502303	0,24	0.53
					40		CMT032502304	0,24	0.54
					1		CMT032502306	0,24	0.54
					1 ¼		CMT032502308	0,24	0.53
					1 ⅜		CMT032502311	0,24	0.53
25	154,70	6.091	77,35	3.045	1 ⅞		CMT032502309	0,24	0.53
					1 ½		CMT032502310	0,25	0.55
					25		CMT032502501	0,30	0.65
					30		CMT032502502	0,30	0.66
					35		CMT032502503	0,29	0.64
					40		CMT032502504	0,28	0.62
					1		CMT032502506	0,30	0.65
					1 ¼		CMT032502508	0,29	0.64
25	154,70	6.091	77,35	3.045	1 ⅜		CMT032502511	0,29	0.64
					1 ⅞		CMT032502509	0,29	0.64
					1 ½		CMT032502510	0,28	0.61

*Diameter is indicated.

SUITABLE FOR CHAINS:

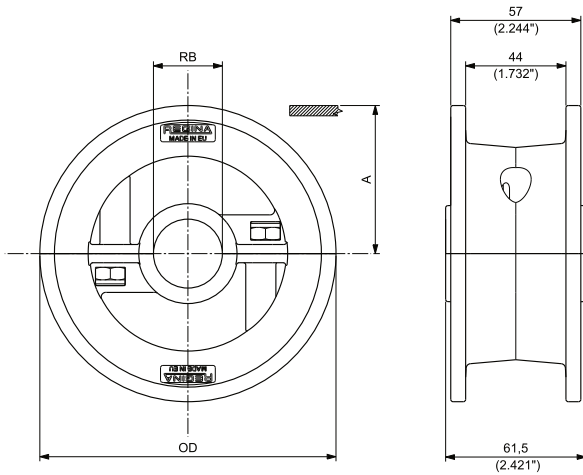
- 915 / PHD915
- PHDG915
- 881
- 981 / 981M / PHD981M
- PHDG981M
- 820
- HFX820
- 831
- 828
- 880 / 880M RG

MATERIALS

SPROCKETS: **PGF** REINFORCED POLYAMIDE

SCREWS: **SS** STAINLESS STEEL

NUTS: **S+ZN** ZINC PLATED STEEL



ROUND BORE- IDLER

MOULDED SPLIT IDLER WHEELS

N. TEETH	OUTSIDE DIAMETER OD		WEAR STRIP POSITIONING A		BORE SIZE*		PART NUMBER ROUND BORE RB IDLER	WEIGHT	
	mm	inch	mm	inch	mm	inch		Kg	lbs
21	129,80	5.110	64,90	2.555	25		CMTS048152125	0,33	0.72
					30		CMTS048152130	0,33	0.73
					35		CMTS048152135	0,31	0.68
					40		CMTS048152140	0,34	0.76
					45		CMTS048152145	0,31	0.69
					1		CMTS0481521254	0,33	0.72
					1 ¼		CMTS0481521317	0,32	0.71
23	142,30	5.602	71,15	2.801	25		CMTS048152325	0,36	0.80
					30		CMTS048152330	0,37	0.81
					35		CMTS048152335	0,35	0.76
					40		CMTS048152340	0,38	0.84
					45		CMTS048152345	0,35	0.77
					1		CMTS0481523254	0,36	0.80
					1 ¼		CMTS0481523317	0,36	0.79
25	154,70	6.091	77,35	3.045	25		CMTS048152525	0,40	0.89
					30		CMTS048152530	0,41	0.90
					35		CMTS048152535	0,39	0.85
					40		CMTS048152540	0,42	0.92
					45		CMTS048152545	0,39	0.86
					1		CMTS0481525254	0,40	0.89
					1 ¼		CMTS0481525317	0,40	0.88

*Diameter is indicated.



SUITABLE FOR CHAINS:

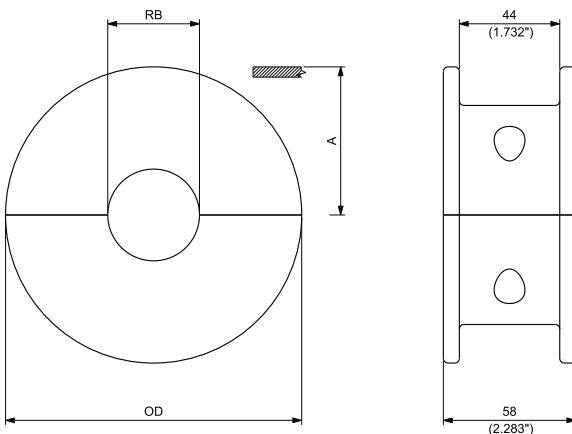
- 915 / PHD915
- PHDG915
- 881
- 981 / 981M / PHD981M
- PHDG981M
- 820
- HFX 820
- 831
- 828
- 880 / 880M RG
- 879

MATERIALS

SPROCKETS:	PA	POLYAMIDE
SCREWS:	SS	STAINLESS STEEL
NUTS:	B	BRASS



17T & 19T IDLERWHEELS (for 21T, 23T & 25T seenext page)



ROUND BORE- IDLER

MACHINED SPLIT IDLER WHEELS

N. TEETH	OUTSIDE DIAMETER OD		WEARSTRIP POSITIONING A		BORESIZE*		PART NUMBER ROUND BORE RB IDLER	WEIGHT	
	mm	inch	mm	inch	mm	inch		Kg	lbs
17	106,50	4.193	53,25	2.096	25		CMAS048151725	0,34	0.76
					30		CMAS048151730	0,33	0.73
					35		CMAS048151735	0,31	0.69
					40		CMAS048151740	0,29	0.65
					1		CMAS0481517254	0,34	0.76
					1 ¼		CMAS0481517317	0,32	0.71
					1 ⅜		CMAS0481517349	0,32	0.71
19	118,00	4.646	59,00	2.323	1 ⅞		CMAS0481517365	0,31	0.69
					1 1/2		CMAS0481517381	0,30	0.66
					25		CMAS048151925	0,45	1.00
					30		CMAS048151930	0,44	0.97
					35		CMAS048151935	0,42	0.93
					40		CMAS048151940	0,40	0.89
					1		CMAS0481519254	0,45	1.00
1 ¼		CMAS0481519317	0,42	0.92					
1 ⅜		CMAS0481519349	0,42	0.92					
1 ⅞		CMAS0481519365	0,40	0.89					
1 1/2		CMAS0481519381	0,38	0.84					

*Diameter is indicated.



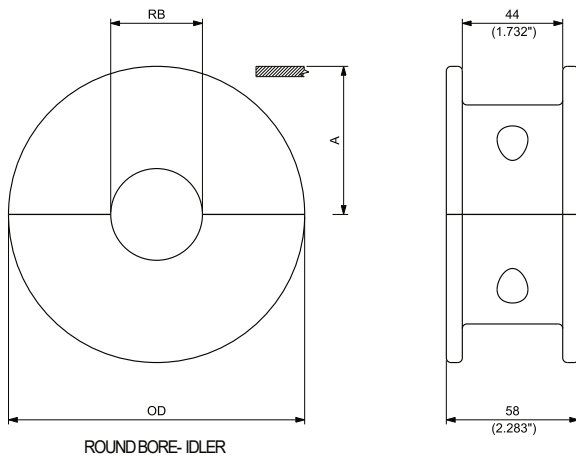
SUITABLE FOR CHAINS:

- 915 / PHD915
- PHDG915
- 881 / 981 / 981M / PHD981M
- PHDG981M
- 820 / HFX820
- 831
- 828
- 880 / 880M RG
- 879

MATERIALS	
SPROCKETS:	PA POLYAMIDE
SCREWS:	SS STAINLESS STEEL
NUTS:	B BRASS



21T, 23T & 25T IDLERWHEELS (for 17T & 19T see previous page)



MACHINED SPLIT IDLER WHEELS

N. TEETH	OUTSIDE DIAMETER OD		WEAR STRIP POSITIONING A		BORE SIZE*		PART NUMBER ROUND BORE IDLER	WEIGHT	
	mm	inch	mm	inch	mm	inch		Kg	lbs
21	129,80	5.110	64,90	2.555	25		CMAS048152125	0,58	1.27
					30		CMAS048152130	0,56	1.24
					35		CMAS048152135	0,54	1.20
					40		CMAS048152140	0,52	1.15
					1		CMAS0481521254	0,58	1.27
					1 1/4		CMAS0481521317	0,56	1.24
					1 7/16		CMAS0481521365	0,54	1.20
					1 1/2		CMAS0481521381	0,53	1.17
23	142,30	5.602	71,15	2.801	25		CMAS048152325	0,72	1.58
					30		CMAS048152330	0,70	1.55
					35		CMAS048152335	0,69	1.51
					40		CMAS048152340	0,67	1.47
					1		CMAS0481523254	0,72	1.58
					1 1/4		CMAS0481523317	0,70	1.55
					1 7/16		CMAS0481523365	0,69	1.51
					1 1/2		CMAS0481523381	0,67	1.49
25	154,70	6.091	77,35	3.045	25		CMAS048152525	0,87	1.92
					30		CMAS048152530	0,85	1.88
					35		CMAS048152535	0,84	1.85
					40		CMAS048152540	0,82	1.80
					1		CMAS0481525254	0,87	1.91
					1 1/4		CMAS0481525317	0,85	1.88
					1 7/16		CMAS0481525365	0,84	1.85
					1 1/2		CMAS0481525381	0,83	1.82

*Diameter is indicated.