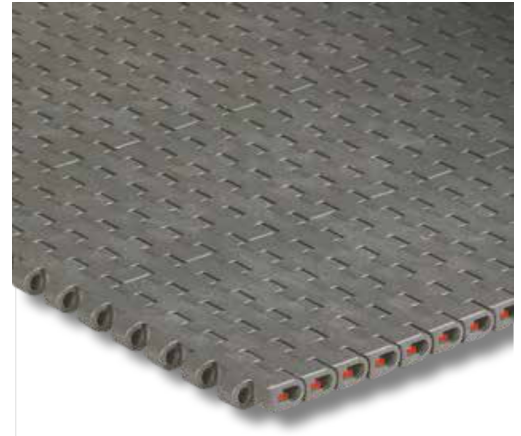


## 8,7 mm (0.343") THICKNESS SOLID TOP

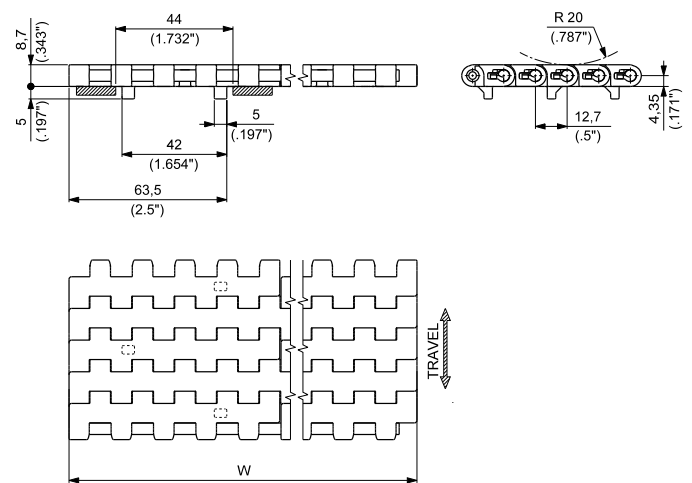
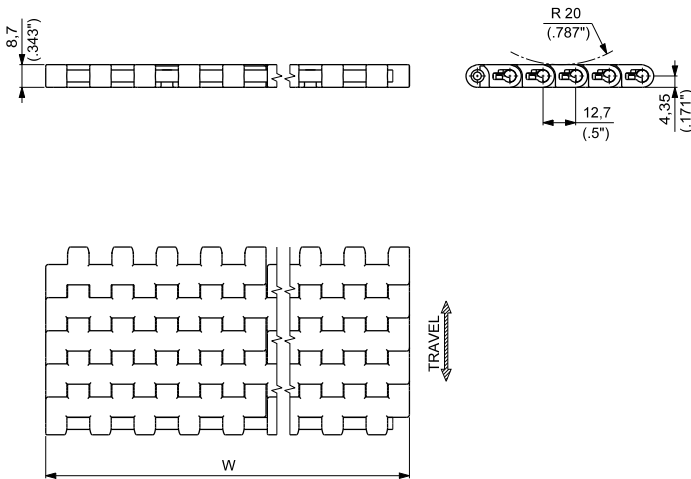
This belt offers a smooth and completely closed surface to provide excellent support and minimize product tipping. Particularly suitable for conveyors where head transfer of products is required.

- Belt widths: 85 mm (3.346") or wider in 85 mm (3.346") increments
- Working Load (at 25°C/77°F): 14000N/m (960lbs/ft) for **UP** and **DK<sup>2</sup>** materials  
10000N/m (685lbs/ft) for **PP** material
- Belt weight: 9,55kg/m<sup>2</sup> (1.95 lbs/ft<sup>2</sup>) for **UP** and **DK<sup>2</sup>** materials  
6,46kg/m<sup>2</sup> (1.32 lbs/ft<sup>2</sup>) for **PP** material



### VERSION WITHOUT TRACKING GUIDE

### VERSION WITH TRACKING GUIDE



NOTE: The belt is also available with single tracking guide at both belt sides. Please contact REGINA customer service for further information.



Materials  
see page 12



Nosebar  
see page 182



Sprockets  
see pages 190+194



Applications  
see page 24

WIDTH W		MATERIALS						Pin	
		Module							
		UP ULTRAPERFORMANCE HOMOPOLYMER DELRIN®		DK <sup>2</sup> SPECIAL DELRIN® REINFORCED WITH KEVLAR®		PP SPECIAL POLYPROPYLENE <sup>(1)</sup>			
		PART NUMBER		PART NUMBER		PART NUMBER			
mm	inch	WITHOUT TRACKING GUIDE	WITH TRACKING GUIDE	WITHOUT TRACKING GUIDE	WITH TRACKING GUIDE	WITHOUT TRACKING GUIDE	WITH TRACKING GUIDE	POLYPROPYLENE (PBT on request)	
85	3.35	600AUP0085	600AGUP0085	600AD2K0085	600AGD2K0085	600APP0085	600AGPP0085		PBT
170	6.69	600BUP0170	600BG1UP0170	600BD2K0170	600BG1D2K0170	600BPP0170	600BG1PP0170		
255	10.04	600BUP0255	600BG1UP0255	600BD2K0255	600BG1D2K0255	600BPP0255	600BG1PP0255		
340	13.39	600BUP0340	600BG1UP0340	600BD2K0340	600BG1D2K0340	600BPP0340	600BG1PP0340		
425	16.73	600BUP0425	600BG1UP0425	600BD2K0425	600BG1D2K0425	600BPP0425	600BG1PP0425		
510	20.08	600BUP0510	600BG1UP0510	600BD2K0510	600BG1D2K0510	600BPP0510	600BG1PP0510		
595	23.43	600BUP0595	600BG1UP0595	600BD2K0595	600BG1D2K0595	600BPP0595	600BG1PP0595		
680	26.77	600BUP0680	600BG1UP0680	600BD2K0680	600BG1D2K0680	600BPP0680	600BG1PP0680		
765	30.12	600BUP0765	600BG1UP0765	600BD2K0765	600BG1D2K0765	600BPP0765	600BG1PP0765		
850	33.46	600BUP0850	600BG1UP0850	600BD2K0850	600BG1D2K0850	600BPP0850	600BG1PP0850		
935	36.81	600BUP0935	600BG1UP0935	600BD2K0935	600BG1D2K0935	600BPP0935	600BG1PP0935		
1020	40.16	600BUP1020	600BG1UP1020	600BD2K1020	600BG1D2K1020	600BPP1020	600BG1PP1020		

<sup>(1)</sup> ACTUAL WIDTH CAN BE UP TO 1% GREATER THAN NOMINAL WIDTH

Belts wider than 1020 mm (40.16") are available in 85 mm (3.35") increments.  
To identify the Part Numbers, please substitute the last four digits of the PN with the desired width.  
Example: for a 1105 mm wide belt (=1020+85 mm) without guide, the PN for UP material is "600BUP1105".

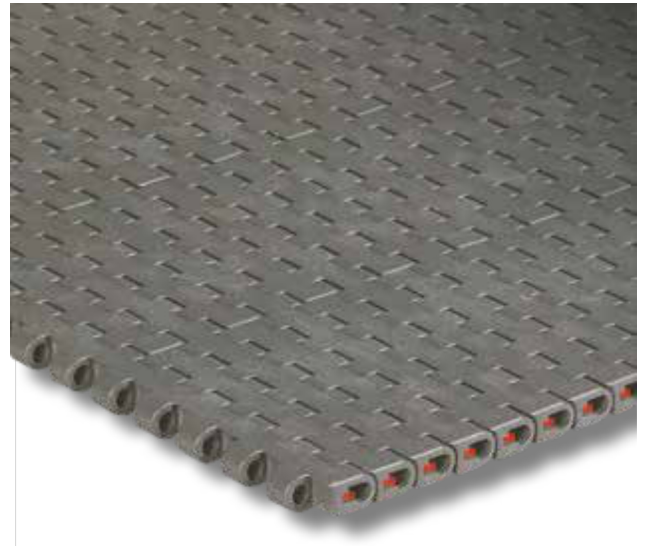


Standard packaging:  
Belt widths ≤ 1020 mm (40.16") are supplied in rolls of 3,048 m (10 ft) each.  
Belt widths ≥ 1105 mm (43.50") are supplied at the length requested by the customer.

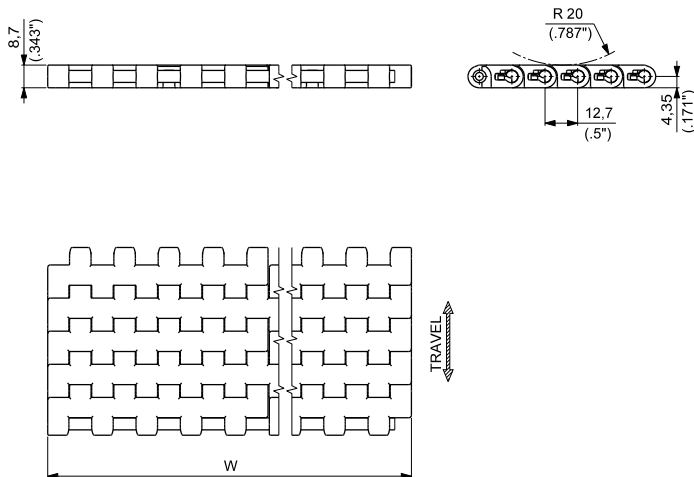
## 8,7 mm (0.343") THICKNESS SOLID TOP

This belt offers a smooth and completely closed surface to provide excellent support and minimize product tipping. Particularly suitable for conveyors where head transfer of products is required.

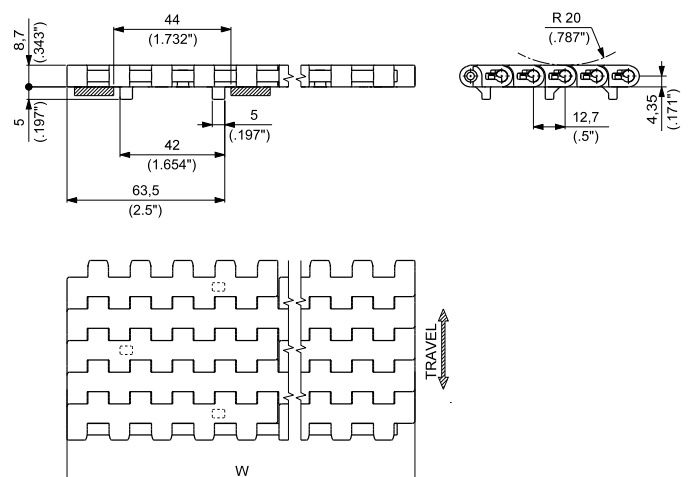
- **Belt widths:** 85 mm (3.346") or wider in 85 mm (3.346") increments
- **Working Load (at 25°C/77°F):** 14000 N/m (960 lbs/ft) for **e-F.A.S.T.** material
- **Belt weight:** 9,55 kg/m<sup>2</sup> (1.95 lbs/ft<sup>2</sup>) for **e-F.A.S.T.** material



VERSION WITHOUT TRACKING GUIDE



VERSION WITH TRACKING GUIDE



NOTE: The belt is also available with single tracking guide at both belt sides. Please contact REGINA customer service for further information.



Materials  
see page 12



Nosebar  
see page 182



Sprockets  
see pages 190-194



Applications  
see page 24

WIDTH W		MATERIALS		Pin
		<span style="color: red; font-weight: bold;">NEW</span> <b>e-F.A.S.T.</b> ECOLOGICAL FRICTION ABATING THERMOPLASTIC		
		PART NUMBER		PBT
mm	inch	WITHOUT TRACKING GUIDE	WITH TRACKING GUIDE	
85	3.35	<b>600AEF0085</b>	<b>600AGEF0085</b>	
170	6.69	<b>600AEF0170</b>	<b>600AG1EF0170</b>	
255	10.04	<b>600AEF0255</b>	<b>600AG1EF0255</b>	
340	13.39	<b>600AEF0340</b>	<b>600AG1EF0340</b>	
425	16.73	<b>600AEF0425</b>	<b>600AG1EF0425</b>	
510	20.08	<b>600AEF0510</b>	<b>600AG1EF0510</b>	
595	23.43	<b>600AEF0595</b>	<b>600AG1EF0595</b>	
680	26.77	<b>600AEF0680</b>	<b>600AG1EF0680</b>	
765	30.12	<b>600AEF0765</b>	<b>600AG1EF0765</b>	
850	33.46	<b>600AEF0850</b>	<b>600AG1EF0850</b>	
935	36.81	<b>600AEF0935</b>	<b>600AG1EF0935</b>	
1020	40.16	<b>600AEF1020</b>	<b>600AG1EF1020</b>	

Belts wider than 1020 mm (40.16") are available in 85 mm (3.35") increments.  
To identify the Part Numbers, please substitute the last four digits of the PN with the desired width.  
Example: for a 1105 mm wide belt (=1020+85 mm) without guide, the PN for EF material is "600AEF1105".



**Standard packaging:**  
Belt widths ≤ 1020 mm (40.16") are supplied in rolls of 3,048 m (10 ft) each.  
Belt widths ≥ 1105 mm (43.50") are supplied at the length requested by the customer.