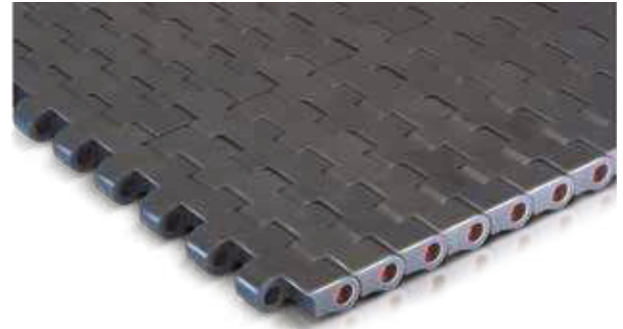


## 8,7 mm (0.343") THICKNESS SOLID TOP

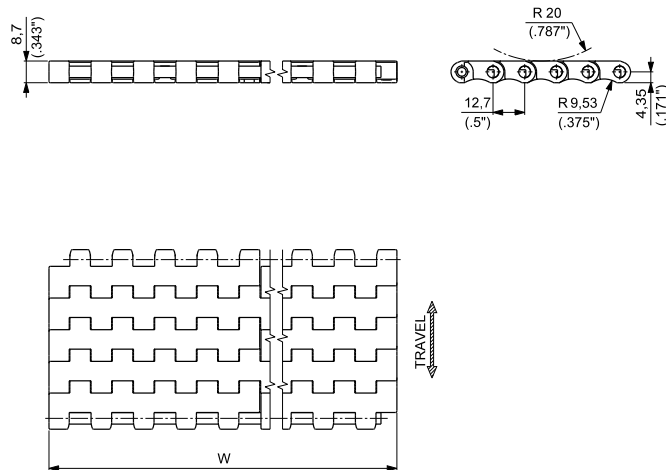
The belt offers a completely closed top surface design for an excellent product support without tipping. The round bottom surface combined to the reduced pitch (1/2") provides the minimum chordal effect for an optimum head transfer of products. Particularly suitable for conveyors where a head transfer of products is required.



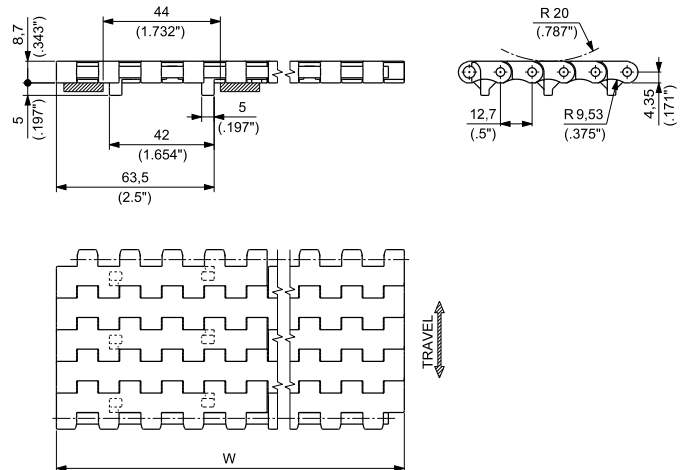
- **Belt widths:** 85 mm (3.346") or wider in 85 mm (3.346") increments
- **Working Load (at 25°C/77°F):** 14000 N/m (960 lbs/ft) for **UP** and **DELIN<sup>2</sup>** materials  
10000 N/m (685 lbs/ft) for **PP** material
- **Belt weight:** 9,55 kg/m<sup>2</sup> (1.96 lbs/ft<sup>2</sup>) for **UP** and **DELIN<sup>2</sup>** materials  
6,46 kg/m<sup>2</sup> (1.32 lbs/ft<sup>2</sup>) for **PP** material



### VERSION WITHOUT TRACKING GUIDE



### VERSION WITH TRACKING GUIDE



Materials  
see page 12



Nosebar  
see page 182



Sprockets  
see pages 190+194



Applications  
see page 24

WIDTH W		MATERIALS						Pin
		Module						
		<b>UP</b> ULTRA PERFORMANCE HOMOPOLYMER DELRIN®		<b>DELIN<sup>2</sup></b> SPECIAL DELRIN® REINFORCED WITH KEVLAR®		<b>PP</b> SPECIAL POLYPROPYLENE <sup>(1)</sup>		
		PART NUMBER		PART NUMBER		PART NUMBER		
mm	inch	WITHOUT TRACKING GUIDE	WITH TRACKING GUIDE	WITHOUT TRACKING GUIDE	WITH TRACKING GUIDE	WITHOUT TRACKING GUIDE	WITH TRACKING GUIDE	
85	3.35	<b>610AUP0085</b>	<b>610AGUP0085</b>	<b>610AD2K0085</b>	<b>610AGD2K0085</b>	<b>610APP0085</b>	<b>610AGPP0085</b>	PBT
170	6.69	<b>610BUP0170</b>	<b>610BG1UP0170</b>	<b>610BD2K0170</b>	<b>610BG1D2K0170</b>	<b>610BPP0170</b>	<b>610BG1PP0170</b>	POLYPROPYLENE (PBT on request)
255	10.04	<b>610BUP0255</b>	<b>610BG1UP0255</b>	<b>610BD2K0255</b>	<b>610BG1D2K0255</b>	<b>610BPP0255</b>	<b>610BG1PP0255</b>	
340	13.39	<b>610BUP0340</b>	<b>610BG1UP0340</b>	<b>610BD2K0340</b>	<b>610BG1D2K0340</b>	<b>610BPP0340</b>	<b>610BG1PP0340</b>	
425	16.73	<b>610BUP0425</b>	<b>610BG1UP0425</b>	<b>610BD2K0425</b>	<b>610BG1D2K0425</b>	<b>610BPP0425</b>	<b>610BG1PP0425</b>	
510	20.08	<b>610BUP0510</b>	<b>610BG1UP0510</b>	<b>610BD2K0510</b>	<b>610BG1D2K0510</b>	<b>610BPP0510</b>	<b>610BG1PP0510</b>	
595	23.43	<b>610BUP0595</b>	<b>610BG1UP0595</b>	<b>610BD2K0595</b>	<b>610BG1D2K0595</b>	<b>610BPP0595</b>	<b>610BG1PP0595</b>	
680	26.77	<b>610BUP0680</b>	<b>610BG1UP0680</b>	<b>610BD2K0680</b>	<b>610BG1D2K0680</b>	<b>610BPP0680</b>	<b>610BG1PP0680</b>	
765	30.12	<b>610BUP0765</b>	<b>610BG1UP0765</b>	<b>610BD2K0765</b>	<b>610BG1D2K0765</b>	<b>610BPP0765</b>	<b>610BG1PP0765</b>	
850	33.46	<b>610BUP0850</b>	<b>610BG1UP0850</b>	<b>610BD2K0850</b>	<b>610BG1D2K0850</b>	<b>610BPP0850</b>	<b>610BG1PP0850</b>	
935	36.81	<b>610BUP0935</b>	<b>610BG1UP0935</b>	<b>610BD2K0935</b>	<b>610BG1D2K0935</b>	<b>610BPP0935</b>	<b>610BG1PP0935</b>	
1020	40.16	<b>610BUP1020</b>	<b>610BG1UP1020</b>	<b>610BD2K1020</b>	<b>610BG1D2K1020</b>	<b>610BPP1020</b>	<b>610BG1PP1020</b>	

<sup>(1)</sup> ACTUAL WIDTH CAN BE UP TO 1% GREATER THAN NOMINAL WIDTH

Belt wider than 1020 mm (40.16") are available in 85 mm (3.35") increments.  
To identify the Part Numbers, please substitute the last four digits of the PN with the desired width.  
Example: for a 1105 mm wide belt (=1020+85 mm) without guide, the PN for UP material is "600BUP1105".



Standard packaging:  
Belt widths ≤ 1020 mm (40.16") are supplied in roll of 3,048 m (10 ft) each.  
Belt widths ≥ 1105 mm (43.50") are supplied at the length requested by the customer.

## 8,7 mm (0.343") THICKNESS SOLID TOP

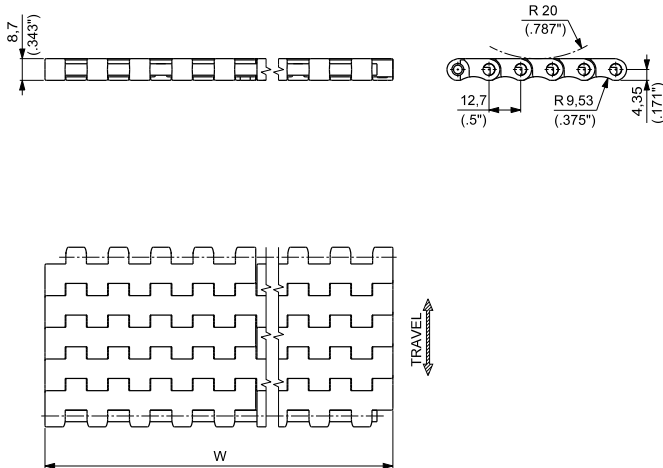
The belt offers a completely closed top surface design for an excellent product support without tipping. The round bottom surface combined to the reduced pitch (1/2") provides the minimum chordal effect for an optimum head transfer of products. Particularly suitable for conveyors where a head transfer of products is required.



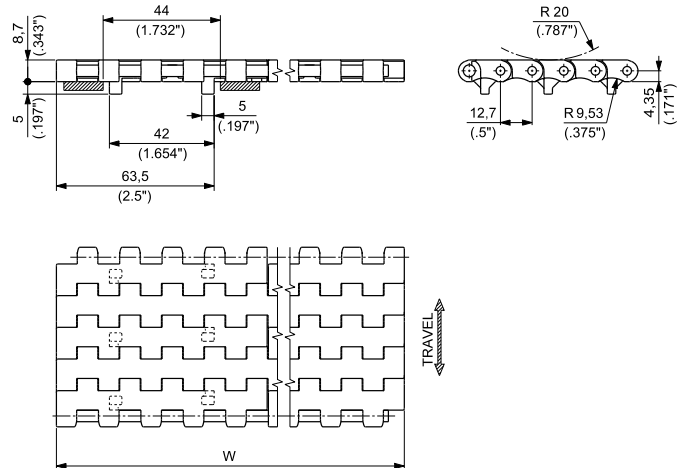
- **Belt widths:** 85 mm (3.346") or wider in 85 mm (3.346") increments
- **Working Load (at 25°C/77°F):** 14000 N/m (960 lbs/ft) for **e-FAST** material
- **Belt weight:** 9,55 kg/m<sup>2</sup> (1.95 lbs/ft<sup>2</sup>) for **e-FAST** material



### VERSION WITHOUT TRACKING GUIDE



### VERSION WITH TRACKING GUIDE



Materials  
see page 12



Nosebar  
see page 182



Sprockets  
see pages 190+194



Applications  
see page 24

WIDTH W		MATERIALS		Pin
		ECOLOGICAL FRICTION ABATING THERMOPLASTIC		
		PART NUMBER		PBT
mm	inch	WITHOUT TRACKING GUIDE	WITH TRACKING GUIDE	
85	3.35	<b>610AEF0085</b>	<b>610AGEF0085</b>	
170	6.69	<b>610AEF0170</b>	<b>610AG1EF0170</b>	
255	10.04	<b>610AEF0255</b>	<b>610AG1EF0255</b>	
340	13.39	<b>610AEF0340</b>	<b>610AG1EF0340</b>	
425	16.73	<b>610AEF0425</b>	<b>610AG1EF0425</b>	
510	20.08	<b>610AEF0510</b>	<b>610AG1EF0510</b>	
595	23.43	<b>610AEF0595</b>	<b>610AG1EF0595</b>	
680	26.77	<b>610AEF0680</b>	<b>610AG1EF0680</b>	
765	30.12	<b>610AEF0765</b>	<b>610AG1EF0765</b>	
850	33.46	<b>610AEF0850</b>	<b>610AG1EF0850</b>	
935	36.81	<b>610AEF0935</b>	<b>610AG1EF0935</b>	
1020	40.16	<b>610AEF1020</b>	<b>610AG1EF1020</b>	

Belts wider than 1020 mm (40.16") are available in 85 mm (3.35") increments.  
To identify the Part Numbers, please substitute the last four digits of the PN with the desired width.  
Example: for a 1105 mm wide belt (=1020+85 mm) without guide, the PN for EF material is "610AEF1105".



**Standard packaging:**  
Belt widths ≤ 1020 mm (40.16") are supplied in roll of 3,048 m (10 ft) each.  
Belt widths ≥ 1105 mm (43.50") are supplied at the length requested by the customer.