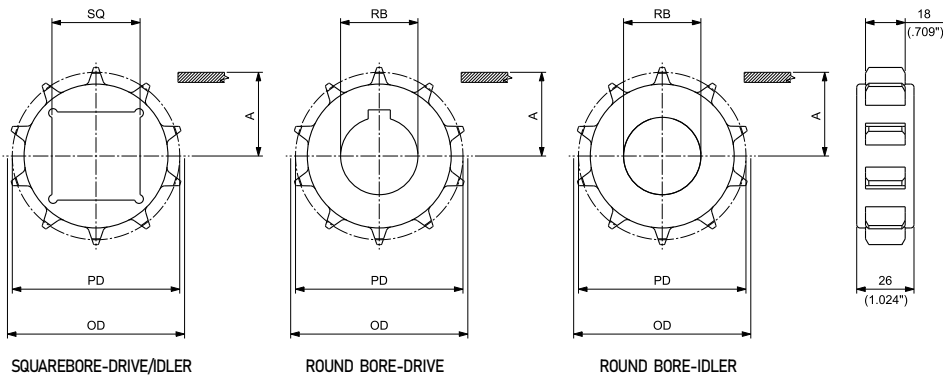


### SUITABLE FOR CHAINS:

- USPM
- USP
- LBP USPM
- LBP XSPM
- HF USPM / HFS USPM

### MATERIALS

SPROCKETS: **PA** POLYAMIDE



### MACHINED SOLID DRIVE AND IDLER SPROCKETS

N. TEETH	PITCH DIAMETER PD		OUTSIDE DIAMETER OD		WEARSTRIP POSITIONING A		BORESIZE*		SQUARE BORE SQ DRIVE/IDLER	PART NUMBER		WEIGHT	
	mm	inch	mm	inch	mm	inch	mm	inch**		DRIVE	ROUND BORE RB IDLER	Kg	lbs
8	66,37	2.613	63,80	2.512	26,80	1.055	20			MPBATUSP0820	MPBAFUSP0820	0,05	0.11
							25			MPBATUSP0825	MPBAFUSP0825	0,05	0.10
							30			MPBATUSP0830	MPBAFUSP0830	0,04	0.09
							1			MPBATUSP08254	MPBAFUSP08254	0,05	0.10
							1 3/16			MPBATUSP08301	MPBAFUSP08301	0,04	0.09
						1 1/4			MPBATUSP08317	MPBAFUSP08317	0,04	0.08	
10	82,19	3.236	80,40	3.165	34,70	1.366	30		MPBAQUSP1030	MPBATUSP1030	MPBAFUSP1030	0,09	0.19
							35			MPBATUSP1035	MPBAFUSP1035	0,08	0.17
							40		MPBAQUSP1040	MPBATUSP1040	MPBAFUSP1040	0,07	0.15
							1			MPBATUSP10254	MPBAFUSP10254	0,09	0.20
							1 3/16			MPBATUSP10301	MPBAFUSP10301	0,09	0.19
						1 1/4			MPBATUSP10317	MPBAFUSP10317	0,08	0.18	

\*In case of round bore, diameter is indicated. In case of square bore, side of the square is indicated.

\*\* Imperial round bore drive sprockets are supplied with setscrew. Metric round bore drive sprockets are supplied without setscrew.

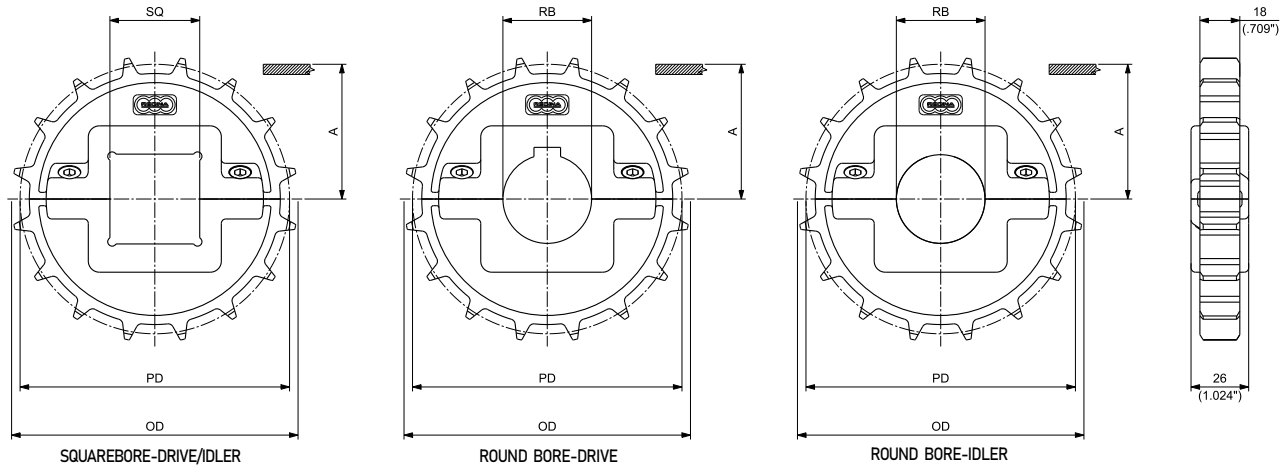
### SUITABLE FOR CHAINS:

- USPM
- USP
- LBP USPM
- LBP XSPM
- HF USPM / HFS USPM

MATERIALS	
SPROCKETS:	<b>PGF</b> REINFORCED POLYAMIDE
SCREW:	<b>SS</b> STAINLESS STEEL
NUTS:	<b>S+ZN</b> ZINC PLATED STEEL



### 12T, 13T, 14T, 15T & 16T SPROCKETS (for 18T & 21T see next page)



### MOULDED SPLIT DRIVE AND IDLER SPROCKETS

N. TEETH	PITCH DIAMETER PD		OUTSIDE DIAMETER OD		WEARSTRIP POSITIONING A		BORESIZE*		PART NUMBER			WEIGHT		
	mm	inch	mm	inch	mm	inch	mm	inch**	SQUARE BORE SQ DRIVE/IDLER	ROUND BORE RB DRIVE	ROUND BORE RB IDLER	Kg	lbs	
12	98,14	3.864	97,00	3.819	42,70	1.681	30	1		MPBSTUSP1230	MPBSFUSP1230	0,12	0.27	
										MPBSTUSP1235	MPBSFUSP1235	0,12	0.26	
										MPBSTUSP1240	MPBSFUSP1240	0,11	0.25	
										MPBSTUSP12254	MPBSFUSP12254	0,13	0.28	
										MPBSTUSP12317	MPBSFUSP12317	0,12	0.27	
										MPBSQUSP12381		0,11	0.24	
13	106,14	4.179	105,50	4.154	46,70	1.839	30	1		MPBSTUSP1330	MPBSFUSP1330	0,12	0.26	
										MPBSTUSP1335	MPBSFUSP1335	0,11	0.25	
										MPBSTUSP1340	MPBSFUSP1340	0,11	0.24	
										MPBSTUSP13254	MPBSFUSP13254	0,12	0.27	
										MPBSTUSP13317	MPBSFUSP13317	0,12	0.26	
										MPBSQUSP13381		0,11	0.24	
14	114,15	4.494	113,15	4.455	50,70	1.996	30	1		MPBSTUSP1430	MPBSFUSP1430	0,15	0.33	
										MPBSTUSP1435	MPBSFUSP1435	0,14	0.32	
										MPBSQUSP1440	MPBSTUSP1440	MPBSFUSP1440	0,14	0.30
										MPBSTUSP14254	MPBSFUSP14254	0,15	0.34	
										MPBSTUSP14317	MPBSFUSP14317	0,15	0.32	
										MPBSQUSP14381	MPBSTUSP14381	MPBSFUSP14381	0,14	0.31
15	122,17	4.810	121,50	4.783	54,70	2.154	30	1		MPBSTUSP1530	MPBSFUSP1530	0,19	0.42	
										MPBSTUSP1535	MPBSFUSP1535	0,18	0.40	
										MPBSQUSP1540	MPBSTUSP1540	MPBSFUSP1540	0,18	0.39
										MPBSTUSP15254	MPBSFUSP15254	0,19	0.42	
										MPBSTUSP15301	MPBSFUSP15301	0,19	0.41	
										MPBSTUSP15317	MPBSFUSP15317	0,19	0.41	
										MPBSTUSP15365	MPBSFUSP15365	0,18	0.40	
										MPBSQUSP15381	MPBSTUSP15381	MPBSFUSP15381	0,18	0.40
16	130,19	5.126	129,20	5.087	58,80	2.315	30	1		MPBSTUSP1630	MPBSFUSP1630	0,20	0.44	
										MPBSTUSP1635	MPBSFUSP1635	0,20	0.43	
										MPBSQUSP1640	MPBSTUSP1640	MPBSFUSP1640	0,19	0.42
										MPBSTUSP1645	MPBSFUSP1645	0,18	0.40	
										MPBSTUSP1650	MPBSFUSP1650	0,17	0.38	
										MPBSTUSP16254	MPBSFUSP16254	0,20	0.45	
										MPBSTUSP16301	MPBSFUSP16301	0,20	0.44	
										MPBSTUSP16317	MPBSFUSP16317	0,20	0.44	
	MPBSQUSP16381	MPBSTUSP16381	MPBSFUSP16381	0,19	0.42									

\*In case of round bore, diameter is indicated. In case of square bore, side of the square is indicated.

\*\* Imperial round bore drive sprockets are supplied with setscrew. Metric round bore drive sprockets are supplied without setscrew.

### SUITABLE FOR CHAINS:

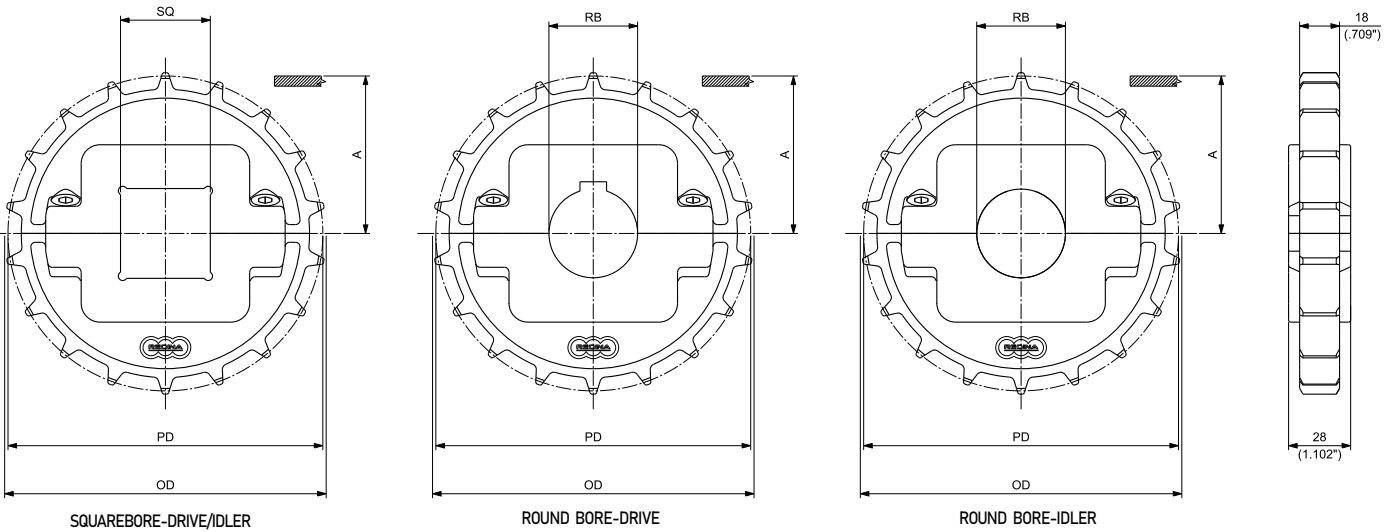
- USPM
- USP
- LBP USPM
- LBP XSPM
- HF USPM / HFS USPM

MATERIALS	
SPROCKETS:	<b>PGF</b> REINFORCED POLYAMIDE
SCREW:	<b>SS</b> STAINLESS STEEL
NUTS:	<b>S+ZN</b> ZINC PLATED STEEL



### 18T & 21T SPROCKETS

(for 12T, 13T, 14T, 15T & 16T see previous page)



### MOULDED SPLIT DRIVE AND IDLER SPROCKETS

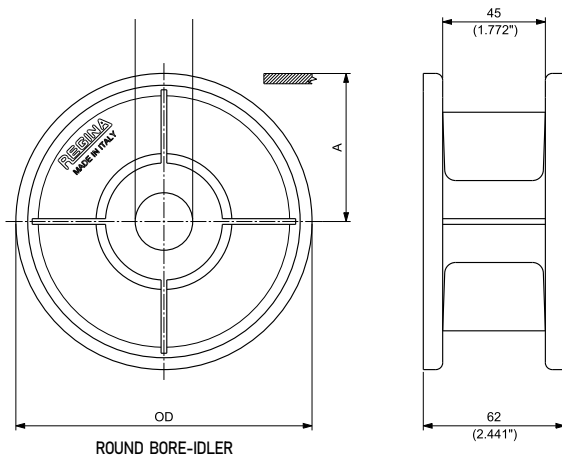
N. TEETH	PITCH DIAMETER PD		OUTSIDE DIAMETER OD		WEARSTRIP POSITIONING A		BORESIZE*		PART NUMBER			WEIGHT		
	mm	inch	mm	inch	mm	inch	mm	inch**	SQUARE BORE SQ DRIVE/IDLER	ROUND BORE RB DRIVE	ROUND BORE RB IDLER	Kg	lbs	
18	146,27	5.759	145,00	5.709	66,79	2.629				MPBSTUSP1830	MPBSFUSP1830	0,33	0.73	
										MPBSTUSP1835	MPBSFUSP1835	0,32	0.71	
									MPBSQUSP1840	MPBSTUSP1840	MPBSFUSP1840	0,32	0.70	
										MPBSTUSP1845	MPBSFUSP1845	0,31	0.68	
									MPBSQUSP1850	MPBSTUSP1850	MPBSFUSP1850	0,30	0.66	
									MPBSQUSP1860	MPBSTUSP1860	MPBSFUSP1860	0,28	0.61	
									MPBSQUSP1865			0,24	0.52	
									1	MPBSTUSP18254	MPBSFUSP18254	0,34	0.74	
									1 3/16	MPBSTUSP18301	MPBSFUSP18301	0,33	0.73	
									1 1/2	MPBSTUSP18317	MPBSFUSP18317	0,33	0.72	
21	170,42	6.709	170,00	6.693	78,84	3.104				MPBSTUSP18365	MPBSFUSP18365	0,32	0.71	
									MPBSQUSP18381	MPBSTUSP18381	MPBSFUSP18381	0,32	0.70	
										MPBSTUSP18508	MPBSFUSP18508	0,30	0.65	
									30	MPBSTUSP2130	MPBSFUSP2130	0,40	0.88	
									35	MPBSTUSP2135	MPBSFUSP2135	0,39	0.86	
									40	MPBSQUSP2140	MPBSTUSP2140	MPBSFUSP2140	0,38	0.85
									45	MPBSTUSP2145	MPBSFUSP2145	0,38	0.83	
									50	MPBSQUSP2150	MPBSTUSP2150	MPBSFUSP2150	0,37	0.81
									60	MPBSQUSP2160	MPBSTUSP2160	MPBSFUSP2160	0,34	0.76
									65	MPBSQUSP2165			0,31	0.67
1	MPBSTUSP21254	MPBSFUSP21254	0,40	0.89										
1 3/16	MPBSTUSP21301	MPBSFUSP21301	0,40	0.88										
1 1/2	MPBSTUSP21317	MPBSFUSP21317	0,40	0.88										
1 7/16	MPBSTUSP21365	MPBSFUSP21365	0,39	0.86										
1 1/2	MPBSQUSP21381	MPBSTUSP21381	MPBSFUSP21381	0,39	0.85									
2	MPBSTUSP21508	MPBSFUSP21508	0,36	0.80										

\*In case of round bore, diameter is indicated. In case of square bore, side of the square is indicated.

\*\* Imperial round bore drive sprockets are supplied with setscrew. Metric round bore drive sprockets are supplied without setscrew.

## MATERIALS

SPROCKETS: **PGF** REINFORCEDPOLYAMIDE



## MOULDED SOLID IDLER WHEELS

N. TEETH	OUTSIDE DIAMETER OD		WEAR STRIP POSITIONING A		BORESIZE*		PART NUMBER ROUND BORE RB IDLER	WEIGHT	
	mm	inch	mm	inch	mm	inch		Kg	lbs
21	129,80	5.110	64,90	2.555	25		CMT032502101	0,22	0.48
					30		CMT032502102	0,22	0.49
					35		CMT032502103	0,22	0.49
					40		CMT032502104	0,20	0.44
					1		CMT032502106	0,22	0.49
					1 ¼		CMT032502108	0,21	0.47
					1 ⅜		CMT032502111	0,21	0.47
					1 ⅞		CMT032502109	0,20	0.44
					1 1/2		CMT032502110	0,22	0.49
					23	142,30	5.602	71,15	2.801
30		CMT032502302	0,25	0.55					
35		CMT032502303	0,24	0.53					
40		CMT032502304	0,24	0.54					
1		CMT032502306	0,24	0.54					
1 ¼		CMT032502308	0,24	0.53					
1 ⅜		CMT032502311	0,24	0.53					
1 ⅞		CMT032502309	0,24	0.53					
1 1/2		CMT032502310	0,25	0.55					
25	154,70	6.091	77,35	3.045					
					30		CMT032502502	0,30	0.66
					35		CMT032502503	0,29	0.64
					40		CMT032502504	0,28	0.62
					1		CMT032502506	0,30	0.65
					1 ¼		CMT032502508	0,29	0.64
					1 ⅜		CMT032502511	0,29	0.64
					1 ⅞		CMT032502509	0,29	0.64
					1 1/2		CMT032502510	0,28	0.61

\*Diameterisindicated.



# Sprockets For USPM Series Belt

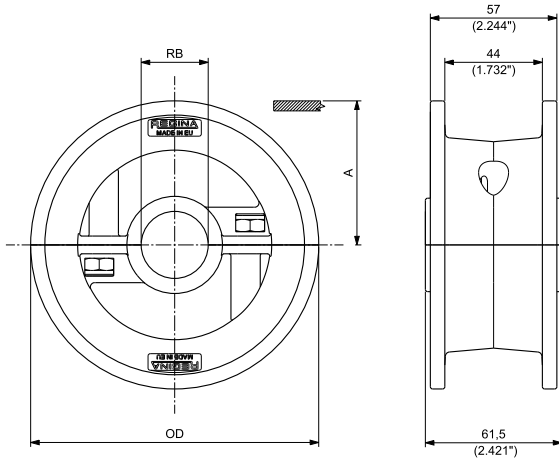


## SUITABLE FOR CHAINS:

- 500 / 600 / 610 / LBP610 / HF 510 / HFS510 / 300 / 200 / HF 200
- 1500 / 1600 / RR1500 / HF 1600 / HFS1600
- 7300 / 7200
- USPM / USP / HF USPM / HFS USPM / LBPUSPM / LBPXSPM
- 782M / 783M / 793M

## MATERIALS

SPROCKETS:	<b>PGF</b>	REINFORCED POLYAMIDE
SCREWS:	<b>SS</b>	STAINLESS STEEL
NUTS:	<b>ZN</b>	ZINC PLATED STEEL



## MOULDED SPLIT IDLER WHEELS

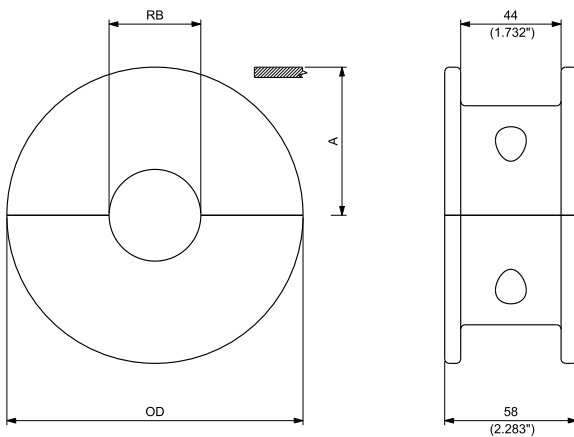
N. TEETH	OUTSIDE DIAMETER OD		WEARSTRIP POSITIONING A		BORESIZE*		PART NUMBER ROUND BORE RB IDLER	WEIGHT	
	mm	inch	mm	inch	mm	inch		Kg	lbs
21	129,80	5.110	64,90	2.555	25		CMTS048152125	0,33	0.72
					30		CMTS048152130	0,33	0.73
					35		CMTS048152135	0,31	0.68
					40		CMTS048152140	0,34	0.76
					45		CMTS048152145	0,31	0.69
					1		CMTS0481521254	0,33	0.72
					1½		CMTS0481521317	0,33	0.71
23	142,30	5.602	71,15	2.801	25		CMTS048152325	0,36	0.80
					30		CMTS048152330	0,37	0.81
					35		CMTS048152335	0,35	0.76
					40		CMTS048152340	0,38	0.84
					45		CMTS048152345	0,35	0.77
					1		CMTS0481523254	0,36	0.80
					1½		CMTS0481523317	0,36	0.79
25	154,70	6.091	77,35	3.045	25		CMTS048152525	0,40	0.89
					30		CMTS048152530	0,41	0.90
					35		CMTS048152535	0,39	0.85
					40		CMTS048152540	0,42	0.92
					45		CMTS048152545	0,39	0.86
					1		CMTS0481525254	0,40	0.89
					1½		CMTS0481525317	0,40	0.88

\*Diameter is indicated.

MATERIALS	
SPROCKETS:	<b>PA</b> POLYAMIDE
SCREWS:	<b>SS</b> STAINLESS STEEL
NUTS:	<b>B</b> BRASS



## 17T & 19T IDLERWHEELS (for 21T, 23T & 25T seenext page)



ROUND BORE-IDLER

## MACHINED SPLIT IDLER WHEELS

N. TEETH	OUTSIDE DIAMETER OD		WEAR STRIP POSITIONING A		BORESIZE*		PART NUMBER ROUND BORE RB IDLER	WEIGHT	
	mm	inch	mm	inch	mm	inch		Kg	lbs
17	106,50	4.193	53,25	2.096	25		CMAS048151725	0,34	0.76
					30		CMAS048151730	0,33	0.73
					35		CMAS048151735	0,31	0.69
					40		CMAS048151740	0,29	0.65
					1		CMAS0481517254	0,34	0.76
					1 ¼		CMAS0481517317	0,32	0.71
					1 ⅜		CMAS0481517349	0,32	0.71
					1 ⅞		CMAS0481517365	0,31	0.69
					1 1/2		CMAS0481517381	0,30	0.66
					19	118,00	4.646	59,00	2.323
30		CMAS048151930	0,44	0.97					
35		CMAS048151935	0,42	0.93					
40		CMAS048151940	0,40	0.89					
1		CMAS0481519254	0,45	1.00					
1 ¼		CMAS0481519317	0,42	0.92					
1 ⅜		CMAS0481519349	0,42	0.92					
1 ⅞		CMAS0481519365	0,40	0.89					
1 1/2		CMAS0481519381	0,38	0.84					

\*Diameterisindicated.