

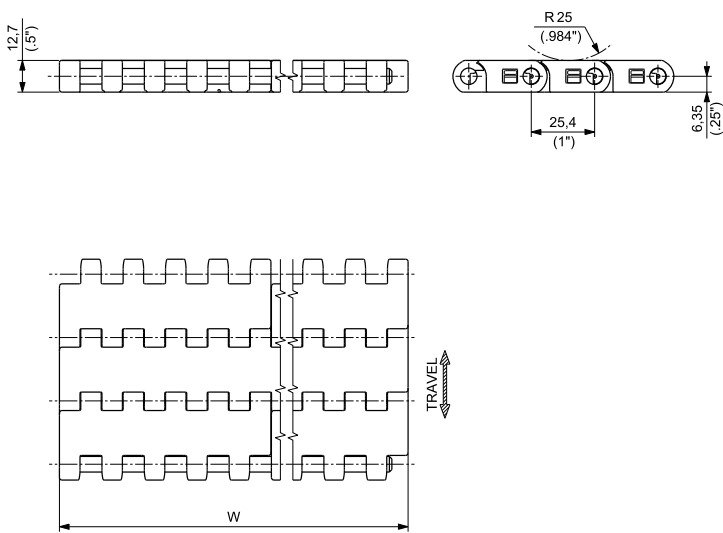
12,7 mm (0.5") THICKNESS SOLID TOP

Extremely good flatness, manufacturing accuracy and low coefficient of friction make the side transfer of the products very easy. Completely closed surface, no gap between the modules, even when engaging on the sprockets. Particularly suitable for glass products, small sized products and unstable containers (for example PET bottles with petaloid base)

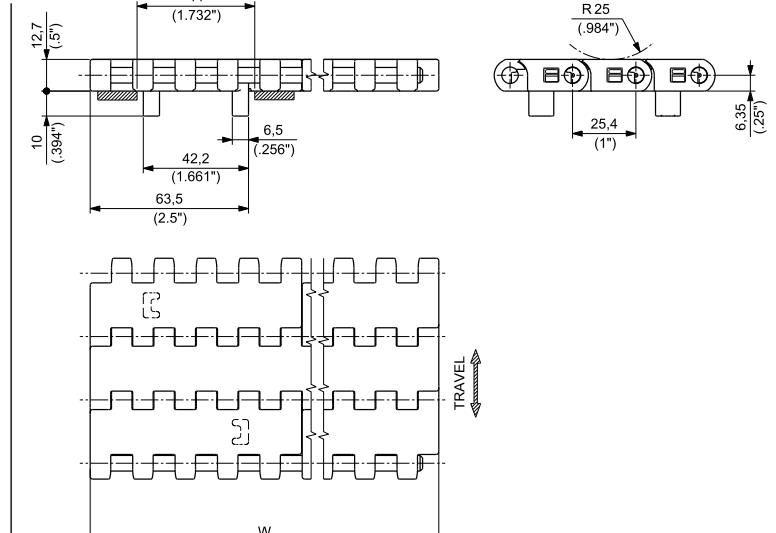
- Belt widths: 85 mm (3.34") or wider in 85 mm (3.34") increments
- Working Load (at 25°C/77°F): 35000 N/m (2400 lbs/ft) for **UP**, **DK²** and **AR** materials
- Belt weight: 14,11 kg/m² (2.89 lbs/ft²) for **UP** and **DK²** materials
13,59 kg/m² (2.78 lbs/ft²) for **AR** material



VERSION WITHOUT TRACKING GUIDE



VERSION WITH TRACKING GUIDE



NOTE: The belt is also available with single tracking guide at both belt sides. Please contact REGINA customer service for further information.

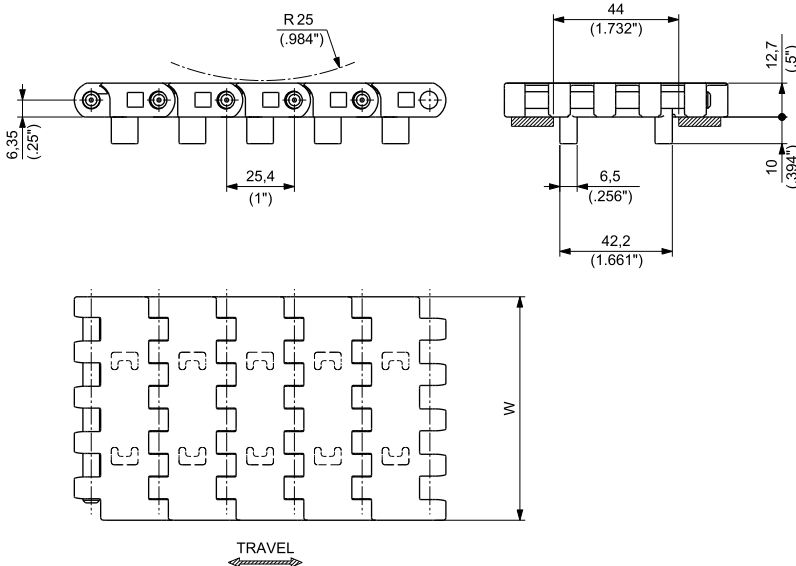
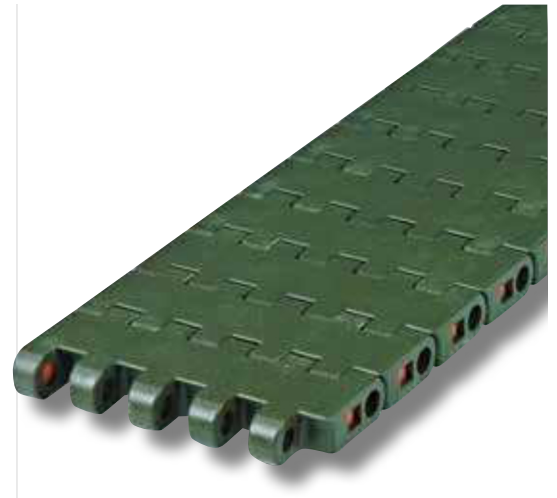


WIDTH W		MATERIALS						Pin
		Module						
		UP ULTRA PERFORMANCE HOMOPOLYMER DELRIN®		DK² SPECIAL DELRIN® REINFORCED WITH KEVLAR®		AR ABRASION RESISTANT POLYAMIDE ⁽¹⁾		
		PART NUMBER		PART NUMBER		PART NUMBER		
mm	inch	WITHOUT TRACKING GUIDE	WITH TRACKING GUIDE	WITHOUT TRACKING GUIDE	WITH TRACKING GUIDE	WITHOUT TRACKING GUIDE	WITH TRACKING GUIDE	PBT
85	3.34	USPMUP0085	USPMGUP0085	USPMD2K0085	USPMGD2K0085	USPMAR0085	USPMGAR0085	
170	6.69	USPMUP0170	USPMG1UP0170	USPMD2K0170	USPMG1D2K0170	USPMAR0170	USPMG1AR0170	
255	10.04	USPMUP0255	USPMG1UP0255	USPMD2K0255	USPMG1D2K0255	USPMAR0255	USPMG1AR0255	
340	13.39	USPMUP0340	USPMG1UP0340	USPMD2K0340	USPMG1D2K0340	USPMAR0340	USPMG1AR0340	
425	16.73	USPMUP0425	USPMG1UP0425	USPMD2K0425	USPMG1D2K0425	USPMAR0425	USPMG1AR0425	
510	20.08	USPMUP0510	USPMG1UP0510	USPMD2K0510	USPMG1D2K0510	USPMAR0510	USPMG1AR0510	
595	23.43	USPMUP0595	USPMG1UP0595	USPMD2K0595	USPMG1D2K0595	USPMAR0595	USPMG1AR0595	
680	26.77	USPMUP0680	USPMG1UP0680	USPMD2K0680	USPMG1D2K0680	USPMAR0680	USPMG1AR0680	
765	30.12	USPMUP0765	USPMG1UP0765	USPMD2K0765	USPMG1D2K0765	USPMAR0765	USPMG1AR0765	
850	33.46	USPMUP0850	USPMG1UP0850	USPMD2K0850	USPMG1D2K0850	USPMAR0850	USPMG1AR0850	
935	36.81	USPMUP0935	USPMG1UP0935	USPMD2K0935	USPMG1D2K0935	USPMAR0935	USPMG1AR0935	
1020	40.16	USPMUP1020	USPMG1UP1020	USPMD2K1020	USPMG1D2K1020	USPMAR1020	USPMG1AR1020	

⁽¹⁾ ACTUAL WIDTH CAN BE UPTO 1% GREATER THAN NOMINAL WIDTH

12,7 mm (0.5") THICKNESS SOLID TOP

The extremely good flatness, manufacturing accuracy and low coefficient of friction make the side transfer of the products very easy. Completely closed surface, no gap between the modules, even when engaging on the sprockets. Particularly suitable for glass products, small sized products and unstable containers (for example PET bottles with petaloid base)



Materials
see page 12



Sprockets
see pages 243+245



Applications
see page 24

MATERIALS		ITEM DESCRIPTION	PART NUMBER	WIDTH W		PLATE THICKNESS		WORKING LOAD (25°C/77°F)		WEIGHT	
Plate	Pin			mm	inch	mm	inch	N	lbs	kg/m	lbs/ft
ULTRA PERFORMANCE HOMOPOLYMER DELTRIN® UP		USPMG UP K 83,8	USPMGUPKRA/000	83,8	3.30	12,7	0.50	2975	670	1,24	0.83
SPECIAL DELTRIN® REINFORCED WITH KEVLAR® D2K	PBT	USPMG D2K K 83,8	USPMGD2KRA/000	83,8	3.30	12,7	0.50	2975	670	1,24	0.68
ABRASION RESISTANT POLYAMIDE ⁽¹⁾ AR		USPMG AR K 83,8	USPMGARKRA/000	83,8	3.30	12,7	0.50	2975	670	1,19	0.80

⁽¹⁾ ACTUAL WIDTH CAN BE UP TO 0,5% GREATER THAN NOMINAL WIDTH