

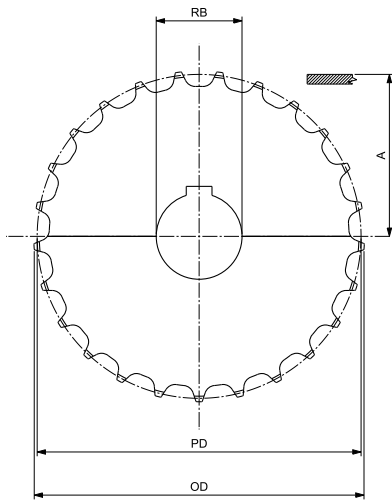


SUITABLE FOR CHAINS:

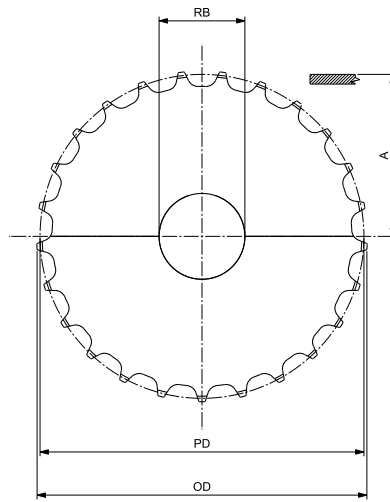
- 2815 / PHD 2815
- PHDG 2815
- 821
- HFX 821
- LBP 821

MATERIALS	
SPROCKETS:	PA POLYAMIDE
SCREWS:	SS STAINLESS STEEL
NUTS:	B BRASS

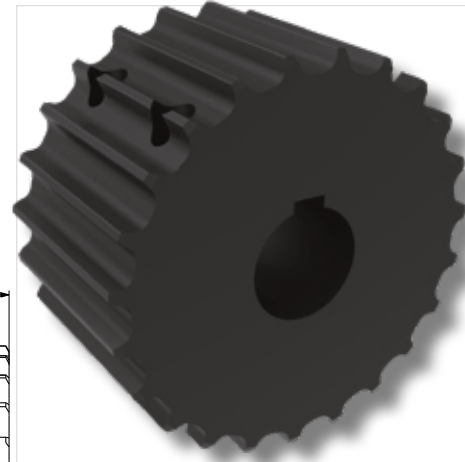
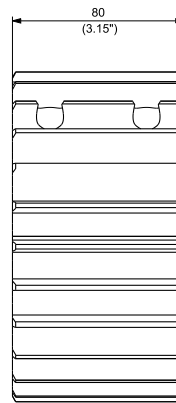
19T, 21T & 23T SPROCKETS
(for 25T, 27T & 29T seenext page)



ROUND BORE- DRIVE



ROUND BORE- IDLER



MACHINED SPLIT DRIVE AND IDLER SPROCKETS

N. TEETH	PITCH DIAMETER PD		OUTSIDE DIAMETER OD		WEARSTRIP POSITIONING A		BORESIZE*		PART NUMBER ROUND BORE RB		WEIGHT	
	mm	inch	mm	inch	mm	inch	mm	inch**	DRIVE	IDLER	Kg	lbs
19	117,34	4.620	117,00	4.606	62,27	2.452	1		CMAS0228151925	CMAS0328151925	0,87	1.92
									CMAS0228151930	CMAS0328151930	0,85	1.88
									CMAS0228151935	CMAS0328151935	0,83	1.83
									CMAS0228151940	CMAS0328151940	0,80	1.77
									CMAS02281519254	CMAS03281519254	0,87	1.92
									CMAS02281519317	CMAS03281519317	0,87	1.92
21	129,26	5.089	129,40	5.094	68,23	2.686	1		CMAS02281519349	CMAS03281519349	0,85	1.88
									CMAS02281519365	CMAS03281519365	0,82	1.81
									CMAS02281519381	CMAS03281519381	0,74	1.64
									CMAS0228152125	CMAS0328152125	1,07	2.36
									CMAS0228152130	CMAS0328152130	1,04	2.29
									CMAS0228152135	CMAS0328152135	1,01	2.23
23	141,22	5.560	141,90	5.587	74,21	2.922	1		CMAS0228152140	CMAS0328152140	0,99	2.17
									CMAS02281521254	CMAS03281521254	1,06	2.33
									CMAS02281521317	CMAS03281521317	1,06	2.33
									CMAS02281521349	CMAS03281521349	1,04	2.29
									CMAS02281521365	CMAS03281521365	0,99	2.17
									CMAS02281521381	CMAS03281521381	1,00	2.20
23	141,22	5.560	141,90	5.587	74,21	2.922	1		CMAS0228152325	CMAS0328152325	1,27	2.81
									CMAS0228152330	CMAS0328152330	1,25	2.76
									CMAS0228152335	CMAS0328152335	1,23	2.71
									CMAS0228152340	CMAS0328152340	1,17	2.58
									CMAS02281523254	CMAS03281523254	1,27	2.80
									CMAS02281523317	CMAS03281523317	1,27	2.80
23	141,22	5.560	141,90	5.587	74,21	2.922	1		CMAS02281523349	CMAS03281523349	1,25	2.76
									CMAS02281523365	CMAS03281523365	1,23	2.71
									CMAS02281523381	CMAS03281523381	1,21	2.68
									CMAS02281523381	CMAS03281523381	1,21	2.68

*Diameter isindicated.

** Imperial round bore drive sprocketsare supplied with setscrew.Metric round bore drive sprocketsare supplied without setscrew.

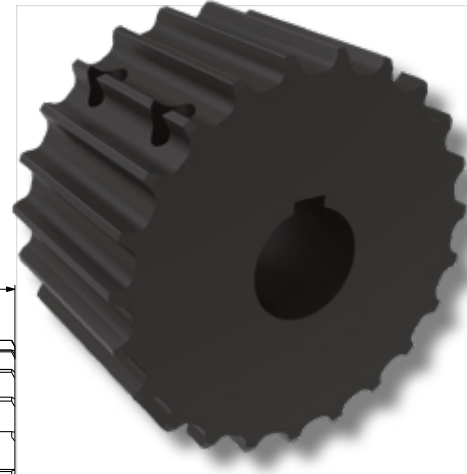
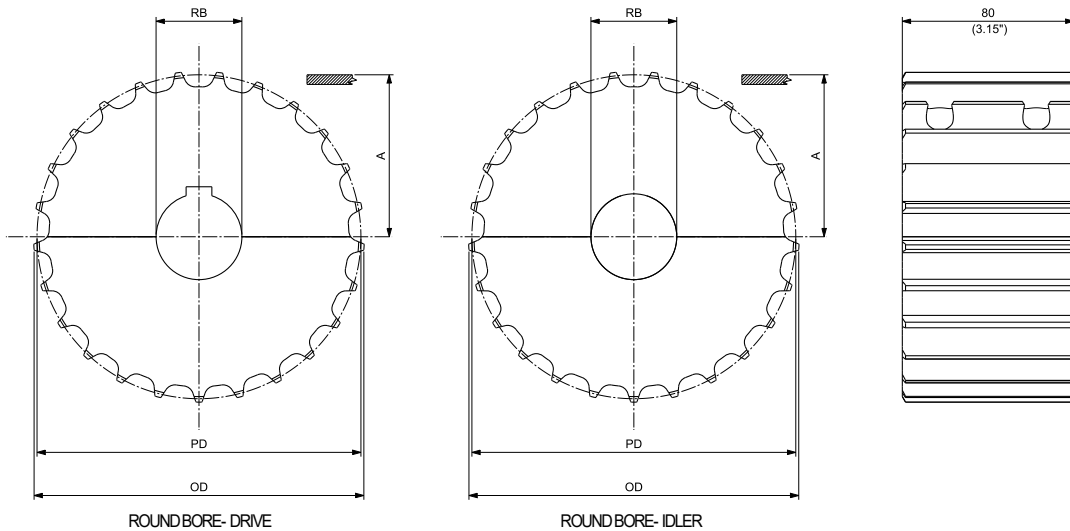


SUITABLE FOR CHAINS:

- 2815 / PHD 2815
- PHDG 2815
- 821
- HFX 821
- LBP 821

MATERIALS	
SPROCKETS:	PA POLYAMIDE
SCREWS:	SS STAINLESS STEEL
NUTS:	B BRASS

25T, 27T & 29T SPROCKETS (for 19T, 21T & 23T see previous page)



MACHINED SPLIT DRIVE AND IDLER SPROCKETS

N. TEETH	PITCH DIAMETER PD		OUTSIDE DIAMETER OD		WEAR STRIP POSITIONING A		BORESIZE*		PART NUMBER ROUND BORE RB		WEIGHT	
	mm	inch	mm	inch	mm	inch	mm	inch**	DRIVE	IDLER	Kg	lbs
25	153,20	6.031	154,20	6.071	80,20	3.157	25		CMAS0228152525	CMAS0328152525	1,56	3,45
							30		CMAS0228152530	CMAS0328152530	1,54	3,41
							35		CMAS0228152535	CMAS0328152535	1,52	3,36
							40		CMAS0228152540	CMAS0328152540	1,49	3,29
							1		CMAS02281525254	CMAS03281525254	1,56	3,45
							1 ¼		CMAS02281525317	CMAS03281525317	1,54	3,41
							1 ⅜		CMAS02281525349	CMAS03281525349	1,54	3,41
							1 ⅞		CMAS02281525365	CMAS03281525365	1,52	3,36
27	165,21	6.504	166,40	6.551	86,21	3.394	25		CMAS0228152725	CMAS0328152725	1,82	4,00
							30		CMAS0228152730	CMAS0328152730	1,80	3,96
							35		CMAS0228152735	CMAS0328152735	1,77	3,91
							40		CMAS0228152740	CMAS0328152740	1,75	3,85
							1		CMAS02281527254	CMAS03281527254	1,81	4,00
							1 ¼		CMAS02281527317	CMAS03281527317	1,81	4,00
							1 ⅜		CMAS02281527349	CMAS03281527349	1,80	3,96
							1 ⅞		CMAS02281527365	CMAS03281527365	1,77	3,91
29	177,23	6.978	178,7	7.035	92,02	3.623	25		CMAS0228152925	CMAS0328152925	2,21	4,87
							30		CMAS0228152930	CMAS0328152930	2,19	4,83
							35		CMAS0228152935	CMAS0328152935	2,17	4,78
							40		CMAS0228152940	CMAS0328152940	2,14	4,72
							1		CMAS02281529254	CMAS03281529254	2,20	4,85
							1 ¼		CMAS02281529317	CMAS03281529317	2,19	4,83
							1 ⅜		CMAS02281529349	CMAS03281529349	2,17	4,78
							1 ⅞		CMAS02281529365	CMAS03281529365	2,14	4,72
		CMAS02281529381	CMAS03281529381	2,12	4,67							

*Diameter is indicated.

** Imperial round bore drive sprockets are supplied with setscrew. Metric round bore drive sprockets are supplied without setscrew.

SUITABLE FOR CHAINS:

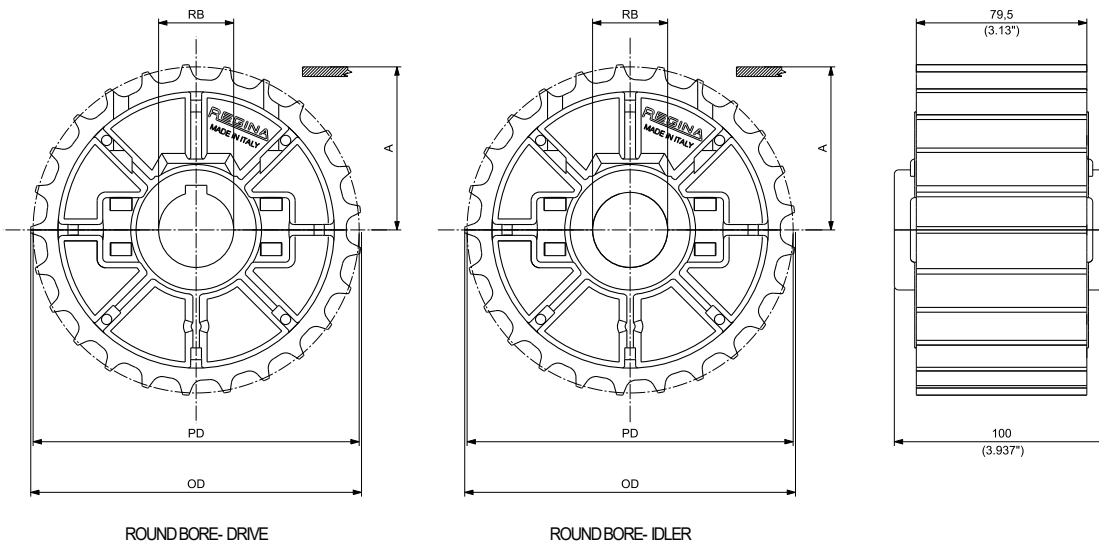
- 821
- HFX821
- LBP821

MATERIALS

SPROCKETS: **PGF** REINFORCED POLYAMIDE

SCREWS: **SS** STAINLESS STEEL

NUTS: **B+NC** NICKEL PLATED BRASS



MOULDED SPLIT DRIVE AND IDLER SPROCKETS

N. TEETH	PITCH DIAMETER PD		OUTSIDE DIAMETER OD		WEARSTRIP POSITIONING A		BORE SIZE*		PART NUMBER ROUND BORE RB		WEIGHT	
	mm	inch	mm	inch	mm	inch	mm	inch**	DRIVE	IDLER	Kg	lbs
25	153,20	6.031	154,20	6.071	79,8	3.142	30		CMT028212502	CMT038212502	0,98	2.17
							35		CMT028212503	CMT038212503	0,97	2.13
							40		CMT028212504	CMT038212504	0,94	2.08
							45		CMT028212505	CMT038212505	0,91	2.02
								1 ¼	CMT028212508	CMT038212508	0,98	2.16
								1 ⅜	CMT028212511	CMT038212511	0,97	2.13
								1 7/16	CMT028212509	CMT038212509	0,96	2.11
								1 1/2	CMT028212510	CMT038212510	0,95	2.10

*Diameter is indicated.

** Imperial round bore drive sprockets are supplied with setscrew. Metric round bore drive sprockets are supplied without setscrew.



SUITABLE FOR CHAINS:

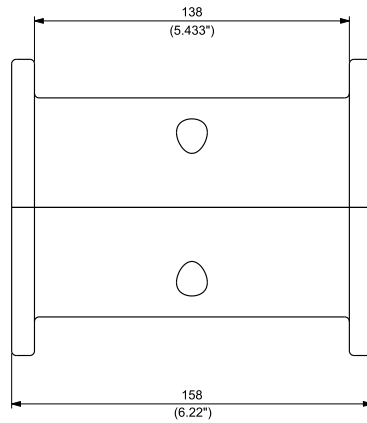
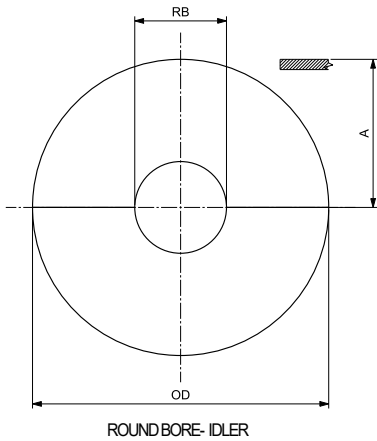
- 821
- HFX821
- LBP821

MATERIALS

SPROCKETS: **PA** POLYAMIDE

SCREWS: **SS** STAINLESS STEEL

NUTS: **B** BRASS



MACHINED SPLIT SPROCKETS
SEE PAGE 129

MACHINED SPLIT IDLERWHEELS

N. TEETH	OUTSIDE DIAMETER OD		WEARSTRIP POSITIONING A		BORESIZE*		PART NUMBER ROUND BORE RB IDLER	WEIGHT	
	mm	inch	mm	inch	mm	inch		Kg	lbs
19	118,00	4.646	59,00	2.323	25		CMAS048211925	1,07	2,36
					30		CMAS048211930	1,03	2,27
					35		CMAS048211935	0,98	2,17
					40		CMAS048211940	0,93	2,05
					1		CMAS0482119254	1,07	2,35
					1 ¼		CMAS0482119317	1,03	2,27
					1 ⅜		CMAS0482119349	0,98	2,17
21	129,80	5.110	64,90	2.555	1 ⅝		CMAS0482119365	0,97	2,13
					1 ¾		CMAS0482119381	0,88	1,93
					25		CMAS048212125	1,39	3,05
					30		CMAS048212130	1,35	2,97
					35		CMAS048212135	1,30	2,87
					40		CMAS048212140	1,25	2,75
					1		CMAS0482121254	1,38	3,05
23	142,30	5.602	71,15	2.801	1 ¼		CMAS0482121317	1,38	3,05
					1 ⅜		CMAS0482121349	1,35	2,97
					1 ⅝		CMAS0482121365	1,30	2,87
					1 ¾		CMAS0482121381	1,27	2,79
					25		CMAS048212325	1,75	3,87
					30		CMAS048212330	1,72	3,78
					35		CMAS048212335	1,67	3,68
25	154,70	6.091	77,35	3.045	40		CMAS048212340	1,62	3,56
					1		CMAS0482123254	1,75	3,86
					1 ¼		CMAS0482123317	1,75	3,86
					1 ⅜		CMAS0482123349	1,72	3,78
					1 ⅝		CMAS0482123365	1,67	3,68
					1 ¾		CMAS0482123381	1,64	3,61
					25		CMAS048212525	2,16	4,75
25	154,70	6.091	77,35	3.045	30		CMAS048212530	2,12	4,67
					35		CMAS048212535	2,07	4,56
					40		CMAS048212540	2,02	4,45
					1		CMAS0482125254	2,15	4,75
					1 ¼		CMAS0482125317	2,15	4,75
					1 ⅜		CMAS0482125349	2,12	4,67
					1 ⅝		CMAS0482125365	2,07	4,56
1 ¾		CMAS0482125381	2,04	4,49					

*Diameter is indicated.

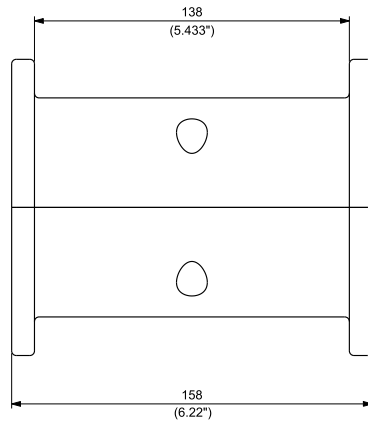
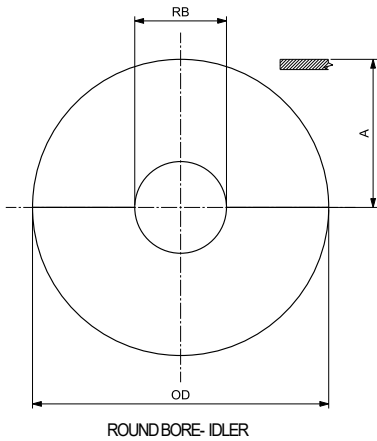


SUITABLE FOR CHAINS:

- 821
- HFX821
- LBP821

MATERIALS

- SPROCKETS: **PA** POLYAMIDE
- SCREWS: **SS** STAINLESS STEEL
- NUTS: **B** BRASS



MACHINED SPLIT SPROCKETS
SEE PAGE 129

MACHINED SPLIT IDLERWHEELS

N. TEETH	OUTSIDE DIAMETER OD		WEARSTRIP POSITIONING A		BORESIZE*		PART NUMBER ROUND BORE RB IDLER	WEIGHT	
	mm	inch	mm	inch	mm	inch		Kg	lbs
19	118,00	4.646	59,00	2.323	1	1	CMAS048211925	1,07	2,36
							CMAS048211930	1,03	2,27
							CMAS048211935	0,98	2,17
							CMAS048211940	0,93	2,05
							CMAS0482119254	1,07	2,35
							CMAS0482119317	1,03	2,27
							CMAS0482119349	0,98	2,17
							CMAS0482119365	0,97	2,13
							CMAS0482119381	0,88	1,93
							CMAS048212125	1,39	3,05
21	129,80	5.110	64,90	2.555	1	1 1/4	CMAS048212130	1,35	2,97
							CMAS048212135	1,30	2,87
							CMAS048212140	1,25	2,75
							CMAS0482121254	1,38	3,05
							CMAS0482121317	1,38	3,05
							CMAS0482121349	1,35	2,97
							CMAS0482121365	1,30	2,87
							CMAS0482121381	1,27	2,79
							CMAS048212325	1,75	3,87
							CMAS048212330	1,72	3,78
23	142,30	5.602	71,15	2.801	1	1 3/8	CMAS048212335	1,67	3,68
							CMAS048212340	1,62	3,56
							CMAS0482123254	1,75	3,86
							CMAS0482123317	1,75	3,86
							CMAS0482123349	1,72	3,78
							CMAS0482123365	1,67	3,68
							CMAS0482123381	1,64	3,61
							CMAS048212525	2,16	4,75
							CMAS048212530	2,12	4,67
							25	154,70	6.091
CMAS048212540	2,02	4,45							
CMAS0482125254	2,15	4,75							
CMAS0482125317	2,15	4,75							
CMAS0482125349	2,12	4,67							
CMAS0482125365	2,07	4,56							
CMAS0482125381	2,04	4,49							

*Diameter is indicated.