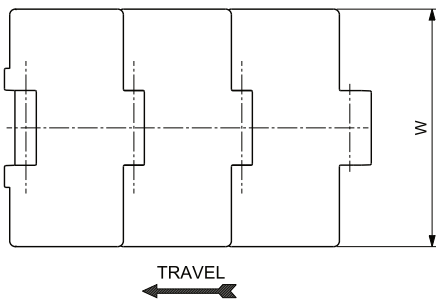
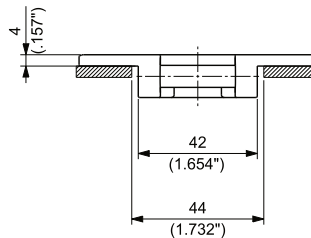
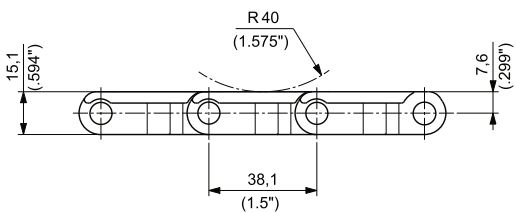


**REINFORCED SINGLE HINGE**  
**REDUCED PLATE GAP**  
**PITCH 1 1/2" (38,1 mm)**  
**THICKNESS 4 mm (0.157")**  
**HINGE 42 mm (1.654")**



Materials  
see page 12



Sprockets  
see pages 147+148



Applications  
see page 22

MATERIALS		ITEM DESCRIPTION	PART NUMBER	WIDTH W		PLATE THICKNESS		WORKING LOAD (25°C/77°F)		WEIGHT	
Plate	Pin			mm	inch	mm	inch	N	lbs	kg/m	lbs/ft
ULTRA PERFORMANCE HOMOPOLYMER DELTRIN® STAINLESS STEEL <b>UP</b>		UP 828 K 3 1/4	UP828KD/000	82,6	3.25	4,0	0.16	2000	450	1,01	0.68
		UP 828 K 83,8	UP828KRA/000	83,8	3.30	4,0	0.16	2000	450	1,02	0.69
		UP 828 K 4 1/2	UP828KG/000	114,3	4.50	4,0	0.16	2000	450	1,18	0.79
SPECIAL DELTRIN® REINFORCED WITH KEVLAR® DK2™ STAINLESS STEEL		D2K 828 K 3 1/4	D2K828KD/000	82,6	3.25	4,0	0.16	2000	450	1,01	0.68
		D2K 828 K 83,8	D2K828KRA/000	83,8	3.30	4,0	0.16	2000	450	1,02	0.69
		D2K 828 K 4 1/2	D2K828KG/000	114,3	4.50	4,0	0.16	2000	450	1,18	0.79
<b>NEW</b> ECOLOGICAL FRICTION ABATING THERMOPLASTIC E-F.A.S.T. STAINLESS STEEL		EF 828 K 3 1/4	EF828KD/000	82,6	3.25	4,0	0.16	2000	450	1,01	0.68
		EF 828 K 83,8	EF828KRA/000	83,8	3.30	4,0	0.16	2000	450	1,02	0.69
		EF 828 K 4 1/2	EF828KG/000	114,3	4.50	4,0	0.16	2000	450	1,18	0.79
ABRASION RESISTANT POLYAMIDE <b>AR</b> STAINLESS STEEL		AR 828 K 3 1/4	AR828KD/000	82,6	3.25	4,0	0.16	2000	450	0,98	0.66
		AR 828 K 4 1/2	AR828KG/000	114,3	4.50	4,0	0.16	2000	450	1,12	0.75