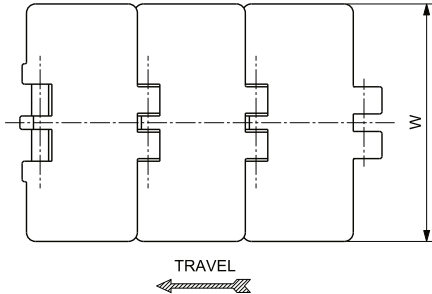
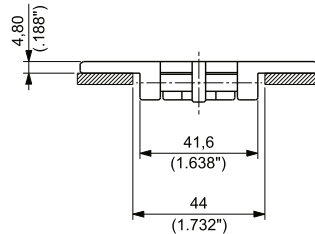
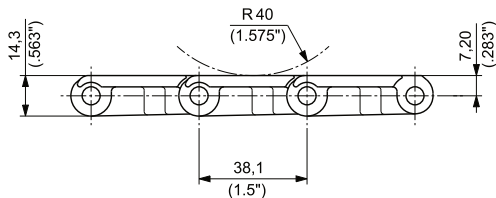


SINGLE HINGE
REINFORCED TOP PLATE
PITCH 1 1/2" (38,1 mm)
THICKNESS 4,8 mm (0.189")
HINGE 41,6 mm (1.638")



Materials
see page 12



Sprockets
see pages 141+144



Applications
see page 22

MATERIALS		ITEM DESCRIPTION	PART NUMBER	WIDTH W		PLATE THICKNESS		WORKING LOAD (25°C/77°F)		WEIGHT	
Plate	Pin			mm	inch	mm	inch	N	lbs	kg/m	lbs/ft
ULTRAPERFORMANCE HOMOPOLYMER DELTRIN® UP	AUSTENITIC STAINLESS STEEL	UP831 K 3 1/4	UP831KD/000	82,6	3.25	4,8	0.19	1600	360	0,90	0.60
		UP831 K 83,8	UP831KRA/000	83,8	3.30	4,8	0.19	1600	360	0,91	0.61
		UP831 K 4 1/2	UP831KG/000	114,3	4.50	4,8	0.19	1600	360	1,09	0.73
		UP831 K 7 1/2	UP831KL/000	190,5	7.50	4,8	0.19	1600	360	1,51	1.01
SPECIAL DELTRIN® REINFORCED WITH KEVLAR® DK²	AUSTENITIC STAINLESS STEEL	D2K831 K 3 1/4	D2K831KD/000	82,6	3.25	4,8	0.19	1600	360	0,88	0.59
		D2K831 K 83,8	D2K831KRA/000	83,8	3.30	4,8	0.19	1600	360	0,89	0.60
		D2K 831 K 4 1/2	D2K831KG/000	114,3	4.50	4,8	0.19	1600	360	1,06	0.72
		D2K 831 K 7 1/2	D2K831KL/000	190,5	7.50	4,8	0.19	1600	360	1,33	0.90