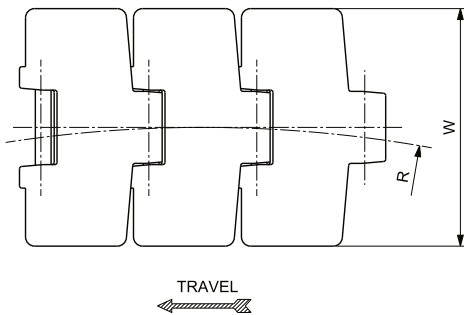
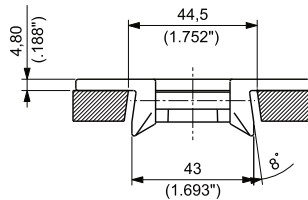
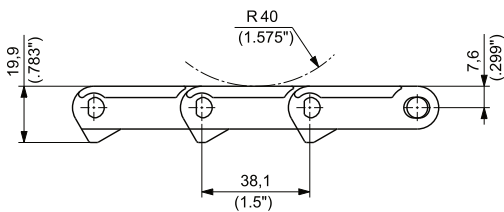




**BEVEL**  
**REINFORCED TOP PLATE**  
**PITCH 1 1/2"(38,1 mm)**  
**THICKNESS 4,8 mm (0.188")**  
**HINGE 43 mm (1.693")**



Materials  
see page 12



Sprockets  
see pages 147+148



Corner tracks  
see page 339



Applications  
see page 22

MATERIALS		ITEM DESCRIPTION	PART NUMBER	WIDTH W		PLATE THICKNESS		SIDEFLEXING RADIUS		WORKINGLOAD (25°C/77°F)		WEIGHT	
Plate	Pin			mm	inch	mm	inch	mm	R inch	N	lbs	kg/m	lbs/ft
ULTRAPERFORMANCE HOMOPOLYMERDELTRIN® <b>UP</b>	AUSTENITIC STAINLESSSTEEL	UP 879 K 3 1/4	UP879KD/000	82,6	3.25	4,8	0.19	457,2	18.00	2000	450	0,96	0.65
		UP 879 K 4 1/2	UP879KG/000	114,3	4.50	4,8	0.19	500,0	19.69	2000	450	1,11	0.75