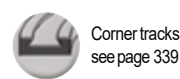
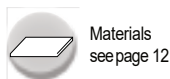
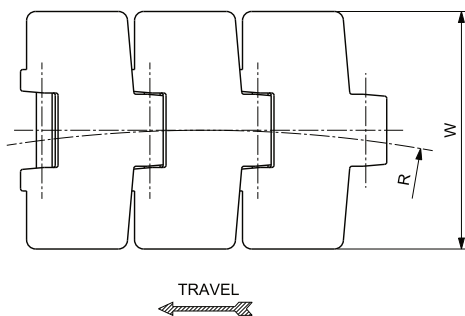
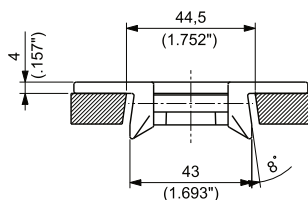
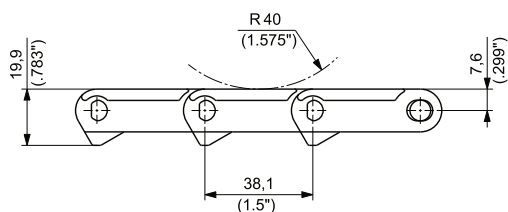


BEVEL
PITCH 1 1/2"(38,1 mm)
THICKNESS 4 mm (0.157")
HINGE 43 mm (1.693")



MATERIALS		ITEM DESCRIPTION	PART NUMBER	WIDTH W		PLATE THICKNESS		SIDE FLEXING RADIUS R		WORKING LOAD (25°C/77°F)		WEIGHT	
Plate	Pin			mm	inch	mm	inch	mm	inch	N	lbs	kg/m	lbs/ft
ULTRAPERFORMANCE HOMOPOLYMER DELRIN® UP	AUSTENITIC STAINLESS STEEL	UP880 K 3 1/4	UP880KD/000	82,6	3.25	4,0	0.16	457,2	18.00	2000	450	0,90	0.61
		UP880 K 4 1/2	UP880KG/000	114,3	4.50	4,0	0.16	500,0	19.69	2000	450	1.06	0.71
ABRASION RESISTANT POLYAMIDE ⁽¹⁾ AR	AUSTENITIC STAINLESS STEEL	AR880 K 3 1/4	AR880KD/000	82,6	3.25	4,0	0.16	457,2	18.00	2000	450	0,76	0.51
		AR880 K 4 1/2	AR880KG/000	114,3	4.50	4,0	0.16	500,0	19.69	2000	450	1,04	0.70

⁽¹⁾ACTUAL WIDTH CAN BE UP TO 0,5% GREATER THAN NOMINAL WIDTH