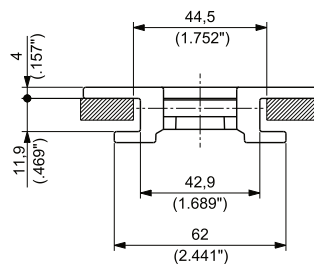
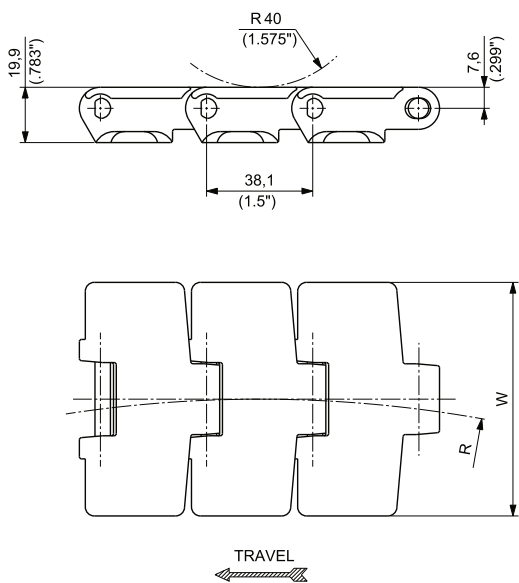


TAB
PITCH 1 1/2"(38,1 mm)
THICKNESS 4 mm (0.157")
HINGE 42,9 mm (1.689")



Materials
see page 12



Sprockets
see pages 147+149



Corner tracks
see page 334



Applications
see page 22

MATERIALS		ITEM DESCRIPTION	PART NUMBER	WIDTH W		PLATE THICKNESS		SIDE FLEXING RADIUS		WORKING LOAD (25°C/77°F)		WEIGHT	
Plate	Pin			mm	inch	mm	inch	mm	R inch	N	lbs	kg/m	lbs/ft
ULTRAPERFORMANCE HOMO POLYMER DELRIN® UP	AUSTENITIC STAINLESS STEEL	UP 880T K 3 1/4	UP880TKD/000	82,6	3.25	4,0	0.16	457,2	18.00	2000	450	1,05	0.71
		UP 880T K 83,8	UP880TKRA/000	83,8	3.30	4,0	0.16	457,2	18.00	2000	450	1,06	0.71
		UP 880T K 4 1/2	UP880TKG/000	114,3	4.50	4,0	0.16	500,0	19.69	2000	450	1,24	0.83
SPECIAL DELRIN® REINFORCED WITH KEVLAR® DK2™	AUSTENITIC STAINLESS STEEL	D2K 880T K 3 1/4	D2K880TKD/000	82,6	3.25	4,0	0.16	457,2	18.00	2000	450	1,03	0.69
		D2K 880T K 83,8	D2K880TKRA/000	83,8	3.30	4,0	0.16	457,2	18.00	2000	450	1,04	0.70
		D2K 880T K 4 1/2	D2K880TKG/000	114,3	4.50	4,0	0.16	500,0	19.69	2000	450	1,22	0.82
ECOLOGICAL FRICTION ABATING THERMOPLASTIC e-F.A.S.T.	AUSTENITIC STAINLESS STEEL	EF 880T K 3 1/4	EF880TKD/000	82,6	3.25	4,0	0.16	457,2	18.00	2000	450	1,03	0.69
		EF 880T K 83,8	EF880TKRA/000	83,8	3.30	4,0	0.16	457,2	18.00	2000	450	1,04	0.70
		EF 880T K 4 1/2	EF880TKG/000	114,3	4.50	4,0	0.16	500,0	19.69	2000	450	1,22	0.82
ABRASION RESISTANT POLYAMIDE ⁽¹⁾ AR	AUSTENITIC STAINLESS STEEL	AR 880T K 3 1/4	AR880TKD/000	82,6	3.25	4,0	0.16	457,2	18.00	2000	450	0,89	0.60
		AR 880T K 4 1/2	AR880TKG/000	114,3	4.50	4,0	0.16	500,0	19.69	2000	450	1,02	0.69

(1) ACTUAL WIDTH CAN BE UP TO 0,5% GREATER THAN NOMINAL WIDTH