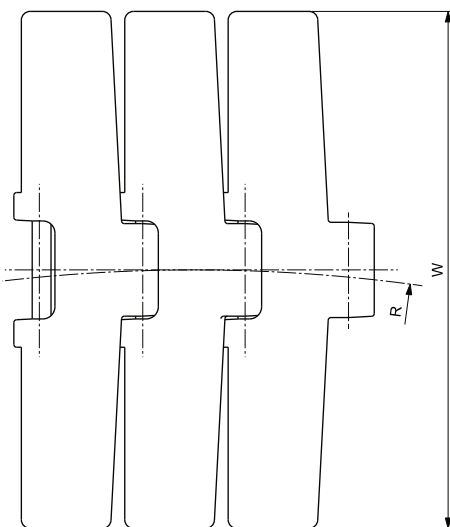
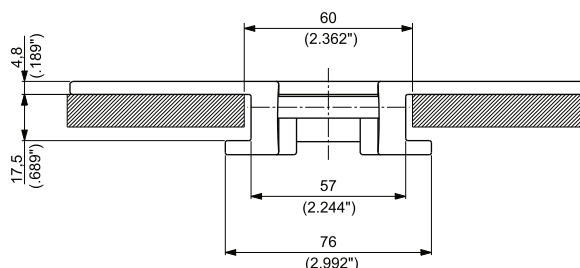
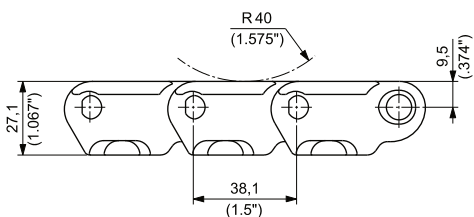


TAB
HEAVY DUTY SINGLEHINGE
REINFORCED TOP PLATE
PITCH 1 1/2"(38,1 mm)
THICKNESS 4,8 mm (0.189")
HINGE 57 mm (2.244")



TRAVEL



Materials see page 12



Sprockets see pages 150+152



Corner tracks see page 335



Applications see page 22

MATERIALS		ITEM DESCRIPTION	PART NUMBER	WIDTH W		PLATE THICKNESS		SIDE FLEXING RADIUS		WORKING LOAD (25°C/77°F)		WEIGHT	
Plate	Pin			mm	inch	mm	inch	mm	R inch	N	lbs	kg/m	lbs/ft
ULTRA PERFORMANCE HOMOPOLYMER DELTRIN® UP	AUSTENITIC STAINLESS STEEL	UP 882T K 4 1/2	UP882TKG/000	114,3	4.50	4,8	0.19	609,6	24	3910	879	2,05	1.38
		UP 882T K 6	UP882TKH/000	152,4	6.00	4,8	0.19	609,6	24	3910	879	2,25	1.51
		UP 882T K 7 1/2	UP882TKL/000	190,5	7.50	4,8	0.19	609,6	24	3910	879	2,45	1.64
		UP 882T K 10	UP882TKM/000	254,0	10.00	4,8	0.19	609,6	24	3910	879	2,75	1.85
		UP 882T K 12	UP882TKN/000	304,8	12.00	4,8	0.19	609,6	24	3910	879	2,99	2.01
SPECIAL DELTRIN® REINFORCED WITH KEVLAR® DK2™	AUSTENITIC STAINLESS STEEL	D2K 882T K 4 1/2	D2K882TKG/000	114,3	4.50	4,8	0.19	609,6	24	3910	879	2,05	1.38
		D2K 882T K 6	D2K882TKH/000	152,4	6.00	4,8	0.19	609,6	24	3910	879	2,25	1.51
		D2K 882T K 7 1/2	D2K882TKL/000	190,5	7.50	4,8	0.19	609,6	24	3910	879	2,45	1.64
NEW ECOLOGICAL FRICTION ABATING THERMOPLASTIC e-FAST.	AUSTENITIC STAINLESS STEEL	EF 882T K 4 1/2	EF882TKG/000	114,3	4.50	4,8	0.19	609,6	24	3910	879	2,05	1.38