

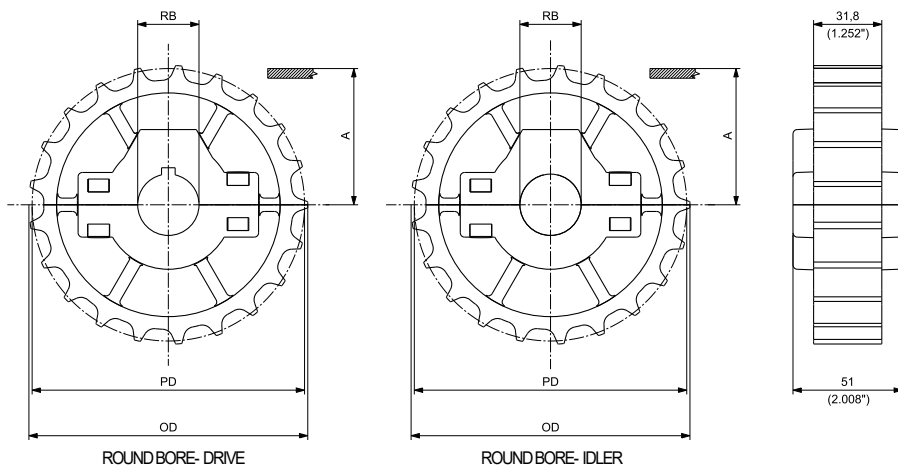
### SUITABLE FOR CHAINS:

- 881 / 881T
- 981 / 981T
- PHDG981T
- 982T
- 803

### MATERIALS

SPROCKETS:	<b>PGF</b>	REINFORCEDPOLYAMIDE
SCREWS:	<b>SS</b>	STAINLESS STEEL
NUTS:	<b>B+NC</b>	NICKEL PLATED BRASS

### 19T & 21T SPROCKETS (for 23T & 25T seenext page)



**MOULDED SPLIT IDLERWHEELS FOR881/981 CHAINS**



**MOULDED SOLID IDLERWHEELS FOR881/981 CHAINS**

### MOULDED SPLIT DRIVE AND IDLER SPROCKETS

N. TEETH	PITCH DIAMETER PD		OUTSIDE DIAMETER OD		WEARSTRIP POSITIONING A		BORESIZE*		PART NUMBER ROUND BORE RB		WEIGHT	
	mm	inch	mm	inch	mm	inch	mm	inch**	DRIVE	IDLER	Kg	lbs
19	117,34	4.620	117,00	4.606	62,07	2.444	25		CMT028811901	CMT038811901	0,33	0.73
							30		CMT028811902	CMT038811902	0,32	0.71
							35		CMT028811903	CMT038811903	0,31	0.68
							40		CMT028811904	CMT038811904	0,30	0.66
							45		CMT028811905	CMT038811905	0,29	0.64
								1	CMT028811906	CMT038811906	0,33	0.73
								1 ¼	CMT028811908	CMT038811908	0,32	0.71
								1 ⅜	CMT028811911	CMT038811911	0,32	0.71
								1 ⅞	CMT028811909	CMT038811909	0,31	0.68
								1 1/2	CMT028811910	CMT038811910	0,31	0.68
21	129,30	5.091	130,00	5.118	68,05	2.679	25		CMT028812101	CMT038812101	0,43	0.95
							30		CMT028812102	CMT038812102	0,42	0.93
							35		CMT028812103	CMT038812103	0,41	0.91
							40		CMT028812104	CMT038812104	0,40	0.88
							45		CMT028812105	CMT038812105	0,39	0.85
								1	CMT028812106	CMT038812106	0,43	0.95
								1 ¼	CMT028812108	CMT038812108	0,42	0.92
								1 ⅜	CMT028812111	CMT038812111	0,42	0.92
								1 ⅞	CMT028812109	CMT038812109	0,41	0.90
								1 1/2	CMT028812110	CMT038812110	0,40	0.89

\*Diameter isindicated.

\*\* Imperial round bore drive sprocketsare supplied with setscrew.Metric round bore drive sprocketsare supplied without setscrew.

### SUITABLE FOR CHAINS:

- 881 / 881T
- 981 / 981T
- PHDG981T
- 982T
- 803

### MATERIALS

SPROCKETS: **PGF** REINFORCEDPOLYAMIDE

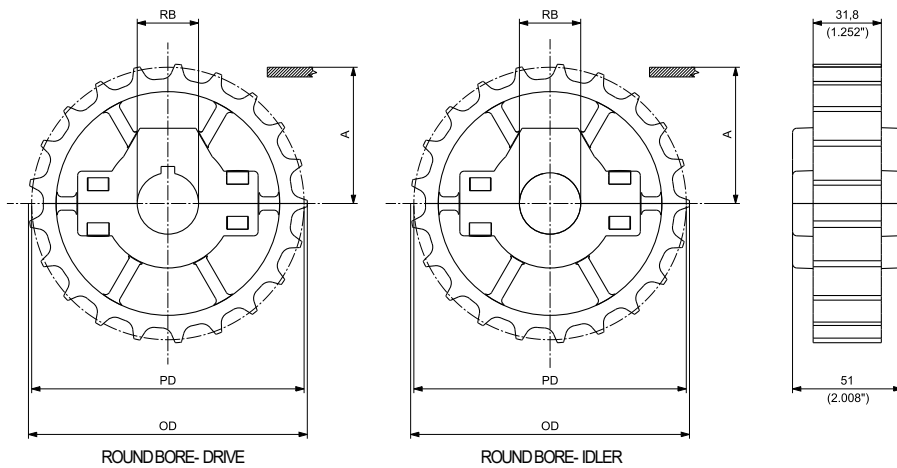
SCREWS: **SS** STAINLESS STEEL

NUTS: **B+NC** NICKEL PLATED BRASS



### 23T & 25T SPROCKETS

(for 19T & 21T see previous page)



**MOULDED SPLIT IDLER WHEELS FOR 881/981 CHAINS**



**MOULDED SOLID IDLER WHEELS FOR 881/981 CHAINS**

### MOULDED SPLIT DRIVE AND IDLER SPROCKETS

N. TEETH	PITCH DIAMETER PD		OUTSIDE DIAMETER OD		WEAR STRIP POSITIONING A		BORESIZE*		PART NUMBER ROUND BORE RB		WEIGHT	
	mm	inch	mm	inch	mm	inch	mm	inch**	DRIVE	IDLER	Kg	lbs
23	141,20	5.559	141,90	5.587	74,00	2.913	25		<b>CMT028812301</b>	<b>CMT038812301</b>	0,47	1.04
							30		<b>CMT028812302</b>	<b>CMT038812302</b>	0,46	1.02
							35		<b>CMT028812303</b>	<b>CMT038812303</b>	0,45	1.00
							40		<b>CMT028812304</b>	<b>CMT038812304</b>	0,44	0.97
							45		<b>CMT028812305</b>	<b>CMT038812305</b>	0,43	0.94
							1		<b>CMT028812306</b>	<b>CMT038812306</b>	0,47	1.04
							1 ¼		<b>CMT028812308</b>	<b>CMT038812308</b>	0,46	1.01
							1 ⅜		<b>CMT028812311</b>	<b>CMT038812311</b>	0,46	1.01
							1 ⅞		<b>CMT028812309</b>	<b>CMT038812309</b>	0,45	0.99
							1 1/2		<b>CMT028812310</b>	<b>CMT038812310</b>	0,44	0.98
25	153,20	6.031	154,20	6.071	80,00	3.150	25		<b>CMT028812501</b>	<b>CMT038812501</b>	0,51	1.13
							30		<b>CMT028812502</b>	<b>CMT038812502</b>	0,50	1.11
							35		<b>CMT028812503</b>	<b>CMT038812503</b>	0,49	1.09
							40		<b>CMT028812504</b>	<b>CMT038812504</b>	0,48	1.06
							45		<b>CMT028812505</b>	<b>CMT038812505</b>	0,47	1.03
							1		<b>CMT028812506</b>	<b>CMT038812506</b>	0,51	1.13
							1 ¼		<b>CMT028812508</b>	<b>CMT038812508</b>	0,50	1.10
							1 ⅜		<b>CMT028812511</b>	<b>CMT038812511</b>	0,50	1.10
							1 ⅞		<b>CMT028812509</b>	<b>CMT038812509</b>	0,49	1.08
							1 1/2		<b>CMT028812510</b>	<b>CMT038812510</b>	0,48	1.07

\*Diameter is indicated.

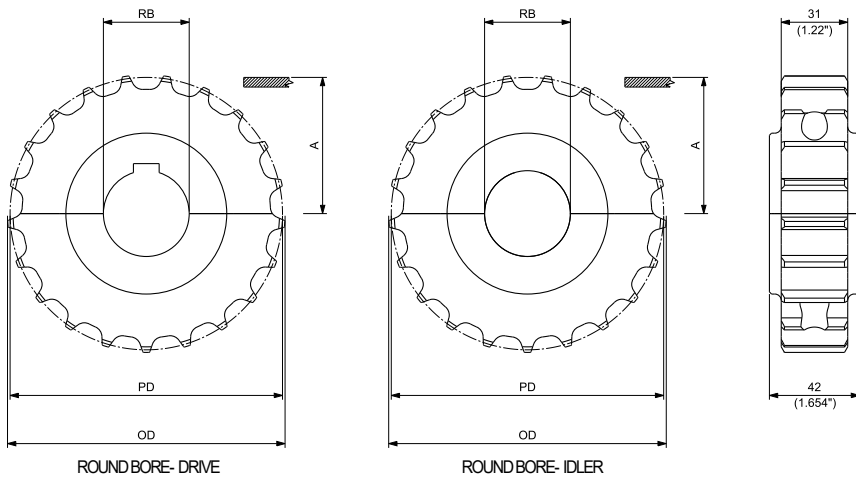
\*\* Imperial round bore drive sprockets are supplied with setscrew. Metric round bore drive sprockets are supplied without setscrew.

### SUITABLE FOR CHAINS:

- 881 / 881T
- 981 / 981T
- PHDG981T
- 982T

MATERIALS	
SPROCKETS:	<b>PA</b> POLYAMIDE
SCREWS:	<b>SS</b> STAINLESS STEEL
NUTS:	<b>B</b> BRASS

### 17T, 19T & 21T SPROCKETS (for 23T, 25T & 27T seenext page)



**MACHINED SPLIT  
IDLERWHEELS  
FOR881/981 CHAINS**  
SEEPAGE 126

### MACHINED SPLIT DRIVE AND IDLER SPROCKETS

N. TEETH	PITCH DIAMETER PD		OUTSIDE DIAMETER OD		WEAR STRIP POSITIONING A		BORESIZE*		PART NUMBER ROUND BORE RB		WEIGHT	
	mm	inch	mm	inch	mm	inch	mm	inch**	DRIVE	IDLER	Kg	lbs
17	105,47	4.152	104,40	4.110	56,14	2.210	25		CMAS028811725	CMAS038811725	0,31	0.68
							30		CMAS028811730	CMAS038811730	0,30	0.66
							35		CMAS028811735	CMAS038811735	0,29	0.63
							40		CMAS028811740	CMAS038811740	0,27	0.60
							1		CMAS0288117254	CMAS0388117254	0,31	0.68
							1 ¼		CMAS0288117317	CMAS0388117317	0,29	0.65
							1 ⅜		CMAS0288117349	CMAS0388117349	0,29	0.65
							1 ⅞		CMAS0288117365	CMAS0388117365	0,28	0.61
							1 1/2		CMAS0288117381	CMAS0388117381	0,28	0.61
							19	117,34	4.620	117,00	4.606	62,07
30		CMAS028811930	CMAS038811930	0,38	0.84							
35		CMAS028811935	CMAS038811935	0,37	0.81							
40		CMAS028811940	CMAS038811940	0,35	0.78							
1		CMAS0288119254	CMAS0388119254	0,39	0.86							
1 ¼		CMAS0288119317	CMAS0388119317	0,38	0.84							
1 ⅜		CMAS0288119349	CMAS0388119349	0,37	0.81							
1 ⅞		CMAS0288119365	CMAS0388119365	0,36	0.80							
1 1/2		CMAS0288119381	CMAS0388119381	0,32	0.71							
21	129,26	5.089	129,40	5.094	68,03	2.678						
							30		CMAS028812130	CMAS038812130	0,46	1.01
							35		CMAS028812135	CMAS038812135	0,45	0.98
							40		CMAS028812140	CMAS038812140	0,43	0.95
							1		CMAS0288121254	CMAS0388121254	0,47	1.03
							1 ¼		CMAS0288121317	CMAS0388121317	0,47	1.03
							1 ⅜		CMAS0288121349	CMAS0388121349	0,46	1.01
							1 ⅞		CMAS0288121365	CMAS0388121365	0,45	0.98
							1 1/2		CMAS0288121381	CMAS0388121381	0,44	0.96

\*Diameter isindicated.

\*\* Imperial round bore drive sprocketsare supplied with setscrew.Metric round bore drive sprocketsare supplied without setscrew.

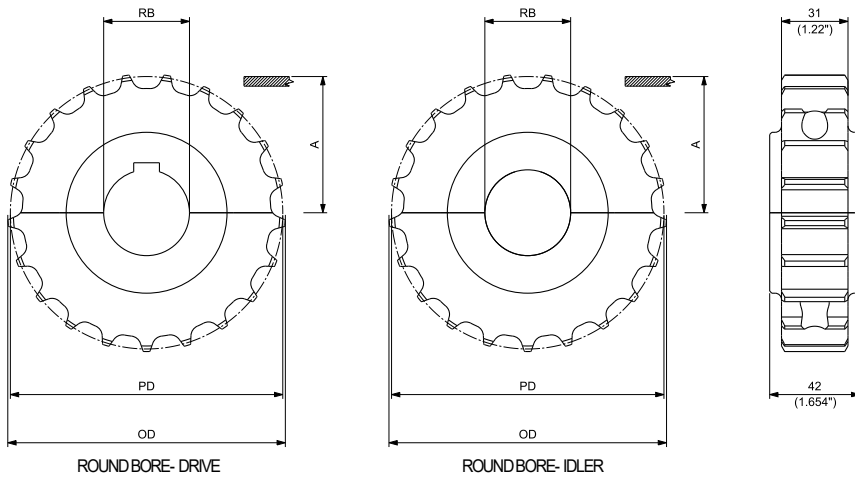
### SUITABLE FOR CHAINS:

- 881 / 881T
- 981 / 981T
- PHDG981T
- 982T

### MATERIALS

SPROCKETS:	<b>PA</b>	POLYAMIDE
SCREWS:	<b>SS</b>	STAINLESS STEEL
NUTS:	<b>B</b>	BRASS

### 23T, 25T & 27T SPROCKETS (for 17T, 19T & 21T see previous page)



**MACHINED SPLIT IDLER WHEELS FOR 881/981 CHAINS**  
SEE PAGE 126

### MACHINED SPLIT DRIVE AND IDLER SPROCKETS

N. TEETH	PITCH DIAMETER PD		OUTSIDE DIAMETER OD		WEAR STRIP POSITIONING A		BORE SIZE*		PART NUMBER ROUND BORE RB		WEIGHT	
	mm	inch	mm	inch	mm	inch	mm	inch**	DRIVE	IDLER	Kg	lbs
23	141,22	5.560	141,90	5.587	74,01	2.914	25		<b>CMAS028812325</b>	<b>CMAS038812325</b>	0,56	1.23
							30		<b>CMAS028812330</b>	<b>CMAS038812330</b>	0,55	1.21
							35		<b>CMAS028812335</b>	<b>CMAS038812335</b>	0,54	1.18
							40		<b>CMAS028812340</b>	<b>CMAS038812340</b>	0,52	1.15
							1		<b>CMAS0288123254</b>	<b>CMAS0388123254</b>	0,56	1.23
							1 ¼		<b>CMAS0288123317</b>	<b>CMAS0388123317</b>	0,56	1.23
							1 ⅜		<b>CMAS0288123349</b>	<b>CMAS0388123349</b>	0,55	1.21
							1 ⅞		<b>CMAS0288123365</b>	<b>CMAS0388123365</b>	0,54	1.18
							1 1/2		<b>CMAS0288123381</b>	<b>CMAS0388123381</b>	0,53	1.16
							25	153,20	6.031	154,20	6.071	80,00
30		<b>CMAS028812530</b>	<b>CMAS038812530</b>	0,68	1.50							
35		<b>CMAS028812535</b>	<b>CMAS038812535</b>	0,67	1.47							
40		<b>CMAS028812540</b>	<b>CMAS038812540</b>	0,65	1.44							
1		<b>CMAS0288125254</b>	<b>CMAS0388125254</b>	0,69	1.52							
1 ¼		<b>CMAS0288125317</b>	<b>CMAS0388125317</b>	0,69	1.52							
1 ⅜		<b>CMAS0288125349</b>	<b>CMAS0388125349</b>	0,68	1.50							
1 ⅞		<b>CMAS0288125365</b>	<b>CMAS0388125365</b>	0,67	1.47							
1 1/2		<b>CMAS0288125381</b>	<b>CMAS0388125381</b>	0,66	1.46							
27	165,21	6.504	166,40	6.551	86,01	3.386						
							30		<b>CMAS028812730</b>	<b>CMAS038812730</b>	0,82	1.81
							35		<b>CMAS028812735</b>	<b>CMAS038812735</b>	0,81	1.79
							40		<b>CMAS028812740</b>	<b>CMAS038812740</b>	0,80	1.75
							1		<b>CMAS0288127254</b>	<b>CMAS0388127254</b>	0,83	1.83
							1 ¼		<b>CMAS0288127317</b>	<b>CMAS0388127317</b>	0,83	1.83
							1 ⅜		<b>CMAS0288127349</b>	<b>CMAS0388127349</b>	0,82	1.81
1 ⅞		<b>CMAS0288127365</b>	<b>CMAS0388127365</b>	0,81	1.79							
1 1/2		<b>CMAS0288127381</b>	<b>CMAS0388127381</b>	0,80	1.76							

\*Diameter is indicated.

\*\* Imperial round bore drive sprockets are supplied with setscrew. Metric round bore drive sprockets are supplied without setscrew.

### SUITABLE FOR CHAINS:

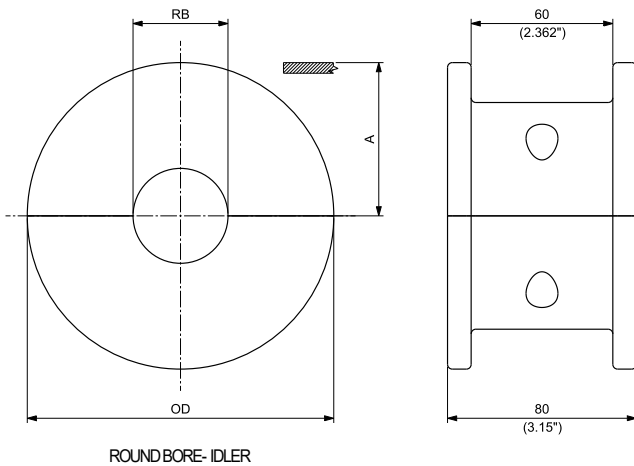
- PHD9157
- PHDG9157
- 881T
- 981T
- PHDG981T
- PHD9857M
- PHDG9857M
- 982T

### MATERIALS

SPROCKETS:	<b>PA</b>	POLYAMIDE
SCREWS:	<b>SS</b>	STAINLESS STEEL
NUTS:	<b>B</b>	BRASS

### 23T & 25T IDLERWHEELS

(for 17T,19T& 21T see previous page)



### MACHINED SPLIT IDLERWHEELS

N. TEETH	OUTSIDE DIAMETER OD		WEAR STRIP POSITIONING A		BORE SIZE*		PART NUMBER ROUND BORE RB IDLER	WEIGHT	
	mm	inch	mm	inch	mm	inch		Kg	lbs
23	142,30	5.602	71,15	2.801	25		CMAS04881T2325	0,98	2.17
					30		CMAS04881T2330	0,96	2.13
					35		CMAS04881T2335	0,94	2.07
					40		CMAS04881T2340	0,91	2.01
						1	CMAS04881T23254	0,98	2.17
						1 ¼	CMAS04881T23317	0,98	2.17
						1 ⅜	CMAS04881T23349	0,96	2.13
						1 7/16	CMAS04881T23365	0,94	2.07
25	154,70	6.091	77,35	3.045	25		CMAS04881T2525	1,19	2.63
					30		CMAS04881T2530	1,17	2.58
					35		CMAS04881T2535	1,15	2.53
					40		CMAS04881T2540	1,12	2.47
						1	CMAS04881T25254	1,19	2.62
						1 ¼	CMAS04881T25317	1,19	2.62
						1 ⅜	CMAS04881T25349	1,17	2.58
						1 7/16	CMAS04881T25365	1,15	2.53
	1 1/2	CMAS04881T25381	1,13	2.50					

\*Diameter is indicated.