

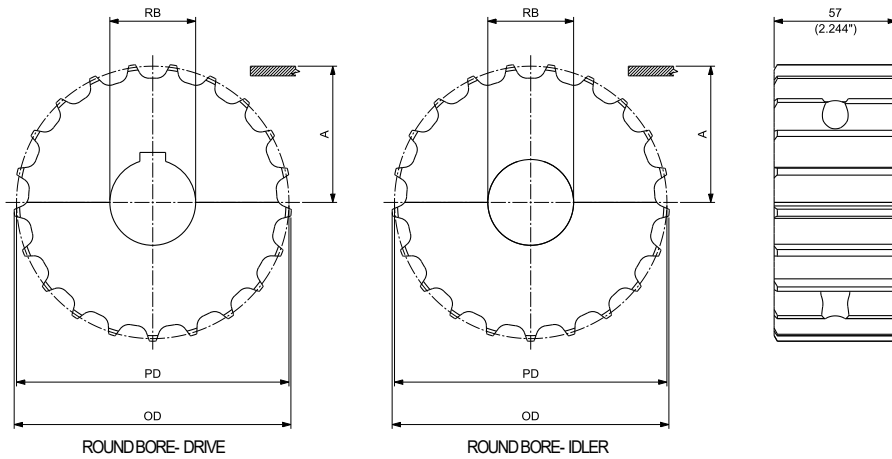
SUITABLE FOR CHAINS:

- PHD9157
- PHDG9157
- PHD9857M
- PHDG9857M

MATERIALS

| | | |
|------------|-----------|-----------------|
| SPROCKETS: | PA | POLYAMIDE |
| SCREWS: | SS | STAINLESS STEEL |
| NUTS: | B | BRASS |

19T, 21T & 23T SPROCKETS (for 25T & 27T see next page)



MACHINED SPLIT IDLER WHEELS
SEE PAGE 139

MACHINED SPLIT DRIVE AND IDLER SPROCKETS

| N. TEETH | PITCH DIAMETER PD | | OUTSIDE DIAMETER OD | | WEARSTRIP POSITIONING A | | BORESIZE* | | PART NUMBER ROUND BORE RB | | WEIGHT | | |
|-----------------|-------------------|-----------------|---------------------|-------|-------------------------|-------|-----------|--------|---------------------------|-----------------|-----------------|--------|-------|
| | mm | inch | mm | inch | mm | inch | mm | inch** | DRIVE | IDLER | Kg | lbs | |
| 19 | 117,34 | 4.620 | 117,00 | 4.606 | 62,07 | 2.444 | 1 | 1 | CMAS0291571925 | CMAS0391571925 | 0,68 | 1.50 | |
| | | | | | | | | | CMAS0291571930 | CMAS0391571930 | 0,66 | 1.46 | |
| | | | | | | | | | CMAS0291571935 | CMAS0391571935 | 0,64 | 1.41 | |
| | | | | | | | | | CMAS0291571940 | CMAS0391571940 | 0,63 | 1.39 | |
| | | | | | | | | | CMAS02915719254 | CMAS03915719254 | 0,68 | 1.50 | |
| | | | | | | | | | 1 ¼ | CMAS02915719317 | CMAS03915719317 | 0,67 | 1.48 |
| | | | | | | | | | 1 ⅜ | CMAS02915719349 | CMAS03915719349 | 0,66 | 1.46 |
| | | | | | | | | | 1 ⅞ | CMAS02915719365 | CMAS03915719365 | 0,64 | 1.41 |
| | | | | | | | | | 1 1/2 | CMAS02915719381 | CMAS03915719381 | 0,62 | 1.37 |
| | | | | | | | | | 21 | 129,26 | 5.089 | 129,40 | 5.094 |
| CMAS0291572130 | CMAS0391572130 | 0,73 | 1.60 | | | | | | | | | | |
| CMAS0291572135 | CMAS0391572135 | 0,71 | 1.57 | | | | | | | | | | |
| CMAS0291572140 | CMAS0391572140 | 0,69 | 1.53 | | | | | | | | | | |
| CMAS02915721254 | CMAS03915721254 | 0,74 | 1.63 | | | | | | | | | | |
| 1 ¼ | CMAS02915721317 | CMAS03915721381 | 0,73 | 1.60 | | | | | | | | | |
| 1 ⅜ | CMAS02915721349 | CMAS03915721349 | 0,73 | 1.60 | | | | | | | | | |
| 1 ⅞ | CMAS02915721365 | CMAS03915721365 | 0,71 | 1.57 | | | | | | | | | |
| 1 1/2 | CMAS02915721381 | CMAS03915721381 | 0,70 | 1.54 | | | | | | | | | |
| 23 | 141,22 | 5.560 | 141,90 | 5.587 | 74,01 | 2.914 | 1 | 1 | | | | | |
| | | | | | | | | | CMAS0291572330 | CMAS0391572330 | 0,98 | 2.16 | |
| | | | | | | | | | CMAS0291572335 | CMAS0391572335 | 0,96 | 2.12 | |
| | | | | | | | | | CMAS0291572340 | CMAS0391572340 | 0,94 | 2.07 | |
| | | | | | | | | | CMAS02915723254 | CMAS03915723254 | 0,99 | 2.18 | |
| | | | | | | | | | 1 ¼ | CMAS02915723317 | CMAS03915723317 | 0,99 | 2.18 |
| | | | | | | | | | 1 ⅜ | CMAS02915723349 | CMAS03915723349 | 0,98 | 2.16 |
| | | | | | | | | | 1 ⅞ | CMAS02915723365 | CMAS03915723365 | 0,96 | 2.12 |
| | | | | | | | | | 1 1/2 | CMAS02915723381 | CMAS03915723381 | 0,94 | 2.07 |

*Diameter is indicated.

** Imperial round bore drive sprockets are supplied with setscrew. Metric round bore drive sprockets are supplied without setscrew.

SUITABLE FOR CHAINS:

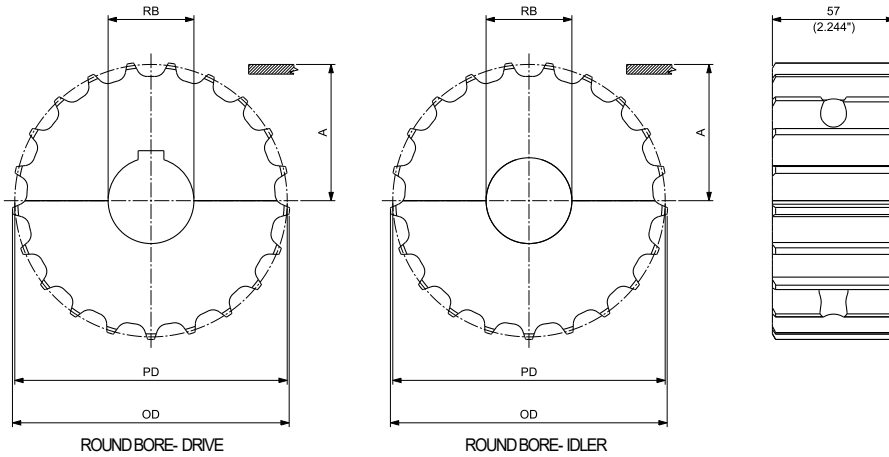
- PHD9157
- PHDG9157
- PHD9857M
- PHDG9857M

MATERIALS

| | | |
|------------|-----------|-----------------|
| SPROCKETS: | PA | POLYAMIDE |
| SCREWS: | SS | STAINLESS STEEL |
| NUTS: | B | BRASS |

25T & 27T SPROCKETS

(for 19T, 21T & 23T see previous page)



MACHINED SPLIT IDLER WHEELS
SEE PAGE 139

MACHINED SPLIT DRIVE AND IDLER SPROCKETS

| N. TEETH | PITCH DIAMETER PD | | OUTSIDE DIAMETER OD | | WEARSTRIP POSITIONING A | | BORESIZE* | | PART NUMBER ROUND BORE RB | | WEIGHT | |
|----------|-------------------|-------|---------------------|-------|-------------------------|-------|-----------|-----------------|---------------------------|-----------------|--------|------|
| | mm | inch | mm | inch | mm | inch | mm | inch** | DRIVE | IDLER | Kg | lbs |
| 25 | 153,20 | 6.031 | 154,20 | 6.071 | 80,00 | 3.150 | 25 | 1 | CMAS0291572525 | CMAS0391572525 | 1,09 | 2.40 |
| | | | | | | | | | CMAS0291572530 | CMAS0391572530 | 1,07 | 2.37 |
| | | | | | | | | | CMAS0291572535 | CMAS0391572535 | 1,06 | 2.33 |
| | | | | | | | | | CMAS0291572540 | CMAS0391572540 | 1,04 | 2.29 |
| | | | | | | | | | CMAS02915725254 | CMAS03915725254 | 1,09 | 2.40 |
| | | | | | | | | | CMAS02915725317 | CMAS03915725317 | 1,09 | 2.40 |
| | | | | | | | | | CMAS02915725349 | CMAS03915725349 | 1,07 | 2.37 |
| | | | | | | | | | CMAS02915725365 | CMAS03915725365 | 1,06 | 2.33 |
| 27 | 165,21 | 6.504 | 166,40 | 6,551 | 86,01 | 3.386 | 25 | 1 | CMAS0291572725 | CMAS0391572725 | 1,27 | 2.80 |
| | | | | | | | | | CMAS0291572730 | CMAS0391572730 | 1,26 | 2.77 |
| | | | | | | | | | CMAS0291572735 | CMAS0391572735 | 1,24 | 2.74 |
| | | | | | | | | | CMAS0291572740 | CMAS0391572740 | 1,22 | 2.69 |
| | | | | | | | | | CMAS02915727254 | CMAS03915727254 | 1,27 | 2.80 |
| | | | | | | | | | CMAS02915727317 | CMAS03915727317 | 1,27 | 2.80 |
| | | | | | | | | | CMAS02915727349 | CMAS03915727349 | 1,26 | 2.77 |
| | | | | | | | | | CMAS02915727365 | CMAS03915727365 | 1,24 | 2.74 |
| | | | | | | | | CMAS02915727381 | CMAS03915727381 | 1,23 | 2.71 | |

*Diameter is indicated.

** Imperial round bore drive sprockets are supplied with setscrew. Metric round bore drive sprockets are supplied without setscrew.

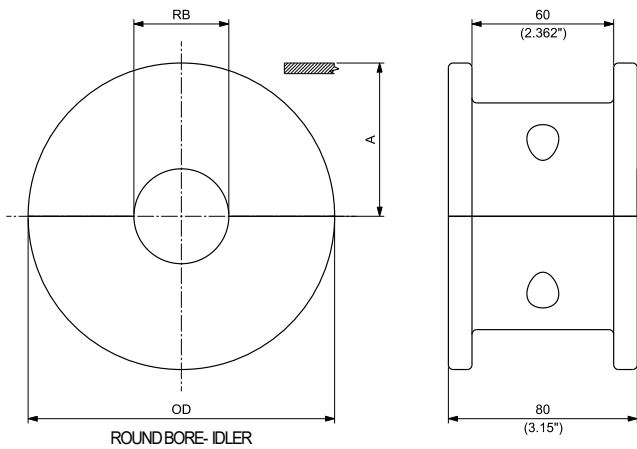
SUITABLE FOR CHAINS:

- PHD9157
- PHDG9157
- 881T
- 981T
- PHDG981T
- PHD9857M
- PHDG9857M
- 982T

MATERIALS

| | | |
|------------|-----------|-----------------|
| SPROCKETS: | PA | POLYAMIDE |
| SCREWS: | SS | STAINLESS STEEL |
| NUTS: | B | BRASS |

17T,19T & 21T IDLERWHEELS (for 23T & 25T seenext page)



MACHINED SPLIT IDLER WHEELS

| N. TEETH | OUTSIDE DIAMETER OD | | WEARSTRIP POSITIONING A | | BORESIZE* | | PART NUMBER ROUND BORE RB IDLER | WEIGHT | |
|----------|---------------------|-----------------|-------------------------|-------|-----------|------|--|--------|------|
| | mm | inch | mm | inch | mm | inch | | Kg | lbs |
| 17 | 106,50 | 4.193 | 53,25 | 2.096 | 25 | | CMAS04881T1725 | 0,44 | 0.97 |
| | | | | | 25 | | CMAS04881T1730 | 0,42 | 0.93 |
| | | | | | 35 | | CMAS04881T1735 | 0,39 | 0.86 |
| | | | | | 40 | | CMAS04881T1740 | 0,37 | 0.82 |
| | | | | | 1 | | CMAS04881T17254 | 0,44 | 0.97 |
| | | | | | 1 ¼ | | CMAS04881T17317 | 0,42 | 0.93 |
| | | | | | 1 ⅜ | | CMAS04881T17349 | 0,42 | 0.93 |
| | | | | | 1 ⅞ | | CMAS04881T17365 | 0,39 | 0.86 |
| 19 | 118,00 | 4.646 | 59,00 | 2.323 | 25 | | CMAS04881T1925 | 0,58 | 1.28 |
| | | | | | 30 | | CMAS04881T1930 | 0,56 | 1.23 |
| | | | | | 35 | | CMAS04881T1935 | 0,54 | 1.19 |
| | | | | | 40 | | CMAS04881T1940 | 0,51 | 1.12 |
| | | | | | 1 | | CMAS04881T19254 | 0,58 | 1.28 |
| | | | | | 1 ¼ | | CMAS04881T19317 | 0,58 | 1.28 |
| | | | | | 1 ⅜ | | CMAS04881T19349 | 0,56 | 1.23 |
| | | | | | 1 ⅞ | | CMAS04881T19365 | 0,54 | 1.19 |
| 21 | 129,80 | 5.110 | 64,90 | 2.555 | 25 | | CMAS04881T2125 | 0,79 | 1.73 |
| | | | | | 30 | | CMAS04881T2130 | 0,77 | 1.69 |
| | | | | | 35 | | CMAS04881T2135 | 0,74 | 1.64 |
| | | | | | 40 | | CMAS04881T2140 | 0,72 | 1.58 |
| | | | | | 1 | | CMAS04881T21254 | 0,78 | 1.73 |
| | | | | | 1 ¼ | | CMAS04881T21317 | 0,78 | 1.73 |
| | | | | | 1 ⅜ | | CMAS04881T21349 | 0,77 | 1.69 |
| | | | | | 1 ⅞ | | CMAS04881T21365 | 0,74 | 1.64 |
| | | CMAS04881T21381 | 0,73 | 1.60 | | | | | |

*Diameter isindicated.

SUITABLE FOR CHAINS:

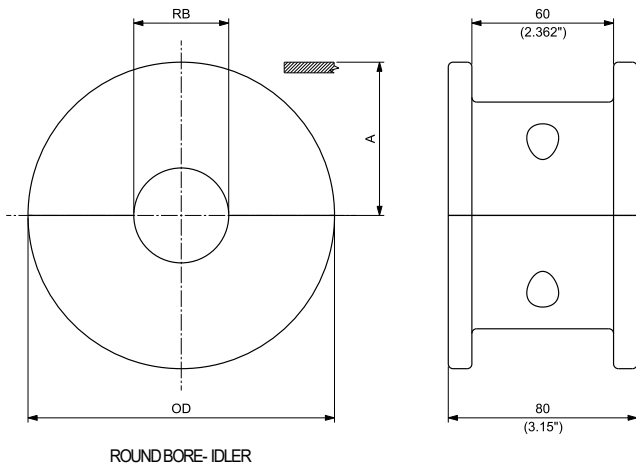
- PHD 9157
- PHDG9157
- 881T
- 981T
- PHDG981T
- PHD 9857M
- PHDG9857M
- 982T

MATERIALS

| | | |
|------------|-----------|-----------------|
| SPROCKETS: | PA | POLYAMIDE |
| SCREWS: | SS | STAINLESS STEEL |
| NUTS: | B | BRASS |

23T & 25T IDLERWHEELS

(for 17T,19T&21T see previous page)



MACHINED SPLIT IDLERWHEELS

| N. TEETH | OUTSIDE DIAMETER OD | | WEAR STRIP POSITIONING A | | BORESIZE* | | PART NUMBER ROUND BORE RB IDLER | WEIGHT | |
|----------|---------------------|-------|--------------------------|-------|-----------|-----------------|--|--------|------|
| | mm | inch | mm | inch | mm | inch | | Kg | lbs |
| 23 | 142,30 | 5.602 | 71,15 | 2.801 | 25 | | CMAS04881T2325 | 0,98 | 2.17 |
| | | | | | 30 | | CMAS04881T2330 | 0,96 | 2.13 |
| | | | | | 35 | | CMAS04881T2335 | 0,94 | 2.07 |
| | | | | | 40 | | CMAS04881T2340 | 0,91 | 2.01 |
| | | | | | 1 | | CMAS04881T23254 | 0,98 | 2.17 |
| | | | | | 1 ¼ | | CMAS04881T23317 | 0,98 | 2.17 |
| | | | | | 1 ⅜ | | CMAS04881T23349 | 0,96 | 2.13 |
| | | | | | 1 ⅞ | | CMAS04881T23365 | 0,94 | 2.07 |
| 25 | 154,70 | 6.091 | 77,35 | 3.045 | 25 | | CMAS04881T2525 | 1,19 | 2.63 |
| | | | | | 30 | | CMAS04881T2530 | 1,17 | 2.58 |
| | | | | | 35 | | CMAS04881T2535 | 1,15 | 2.53 |
| | | | | | 40 | | CMAS04881T2540 | 1,12 | 2.47 |
| | | | | | 1 | | CMAS04881T25254 | 1,19 | 2.62 |
| | | | | | 1 ¼ | | CMAS04881T25317 | 1,19 | 2.62 |
| | | | | | 1 ⅜ | | CMAS04881T25349 | 1,17 | 2.58 |
| | | | | | 1 ⅞ | | CMAS04881T25365 | 1,15 | 2.53 |
| | | | | 1 1/2 | | CMAS04881T25381 | 1,13 | 2.50 | |

*Diameter is indicated.